

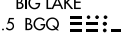
HIGHWAY VISUAL RWY 25R

TED STEVENS ANCHORAGE INTL (ANC) (PANC)

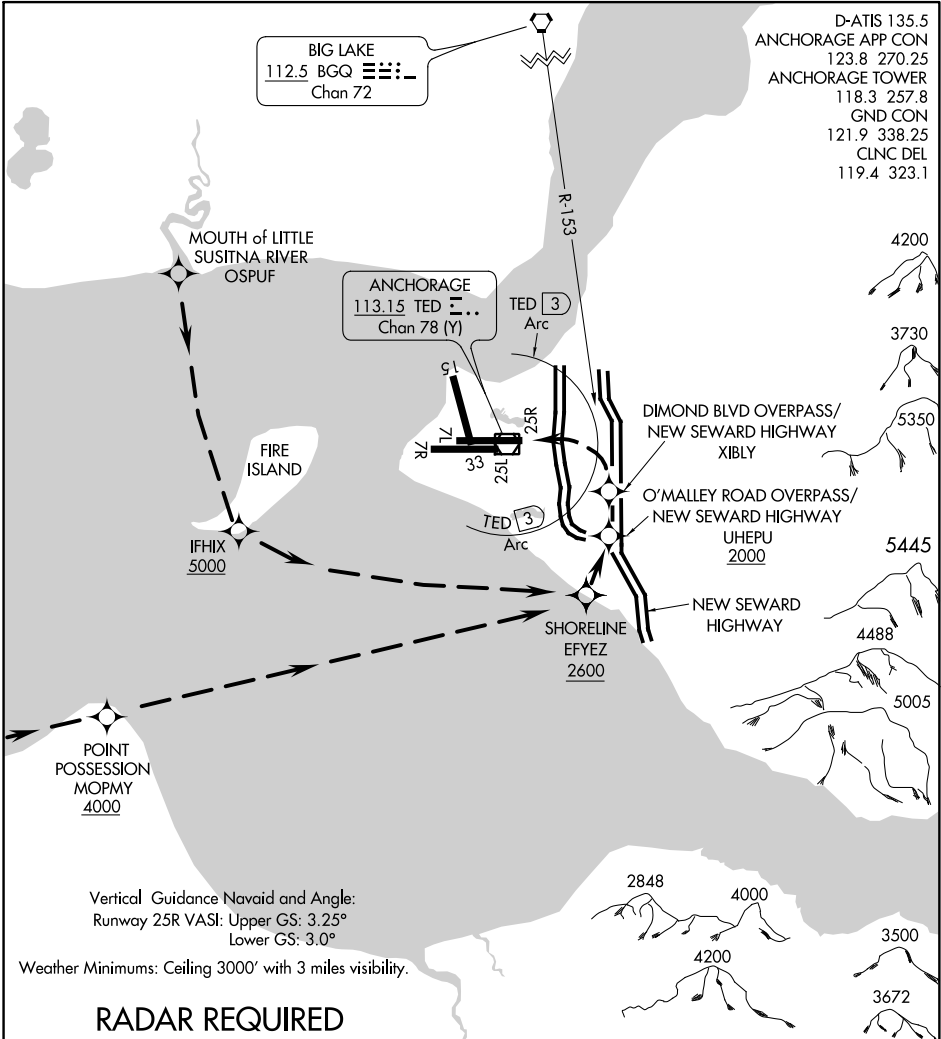
AL-1500 (FAA)

ANCHORAGE, ALASKA

D-ATIS 135.5
 ANCHORAGE APP CON 123.8 270.25
 ANCHORAGE TOWER 118.3 257.8
 GND CON 121.9 338.25
 CLNC DEL 119.4 323.1

BIG LAKE
 112.5 BGQ 
 Chan 72

ANCHORAGE
 113.15 TED 
 Chan 78 (Y)



Vertical Guidance Navaid and Angle:
 Runway 25R VASI: Upper GS: 3.25°
 Lower GS: 3.0°

Weather Minimums: Ceiling 3000' with 3 miles visibility.

RADAR REQUIRED

NM	1	2	3	4	5	6	7	8	9	10	11	12	13	14	15	16	17	18	19	20	21	22	23	24	25	26
----	---	---	---	---	---	---	---	---	---	----	----	----	----	----	----	----	----	----	----	----	----	----	----	----	----	----

HIGHWAY VISUAL RWY 25R
PROCEDURE NOT AUTHORIZED AT NIGHT

AK, 15 AUG 2019 to 10 OCT 2019

AK, 15 AUG 2019 to 10 OCT 2019

HIGHWAY VISUAL RWY 25R

Amdt 1 09FEB12

61°10'N-150°00'W

ANCHORAGE, ALASKA

TED STEVENS ANCHORAGE INTL (ANC) (PANC)