

ELLAM FIVE ARRIVAL

AK, 15 AUG 2019 to 10 OCT 2019

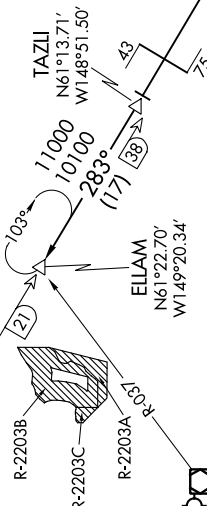
ANCHORAGE APP CON
118.6 290.3
ANCHORAGE INTL D-ATIS
135.5
ELMENDORF AFB ATIS ★
124.3 273.5
MERRILL FIELD ATIS
124.25

NOTE: DME required.



JOHNSTONE POINT
116.7 JOH
Chan 114
N60°28.86'-W146°35.96'
L-1-3-4, H-1

BIG LAKE
112.5 BQG
Chan 72



ANCHORAGE
113.15 TED
Chan 78 (Y)

ARRIVAL ROUTE DESCRIPTION

JOHNSTONE POINT TRANSITION (JOH, ELLAM5): From over JOH VOR/DME on JOH R-287 and BQG R-103 to TAZLI INT, then on BQG R-103 to ELLAM INT. Thence

. . . . from over ELLAM INT expect RADAR vectors to final approach course.

NOTE: Chart not to scale.

AK, 15 AUG 2019 to 10 OCT 2019