

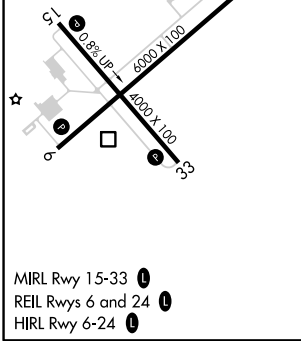
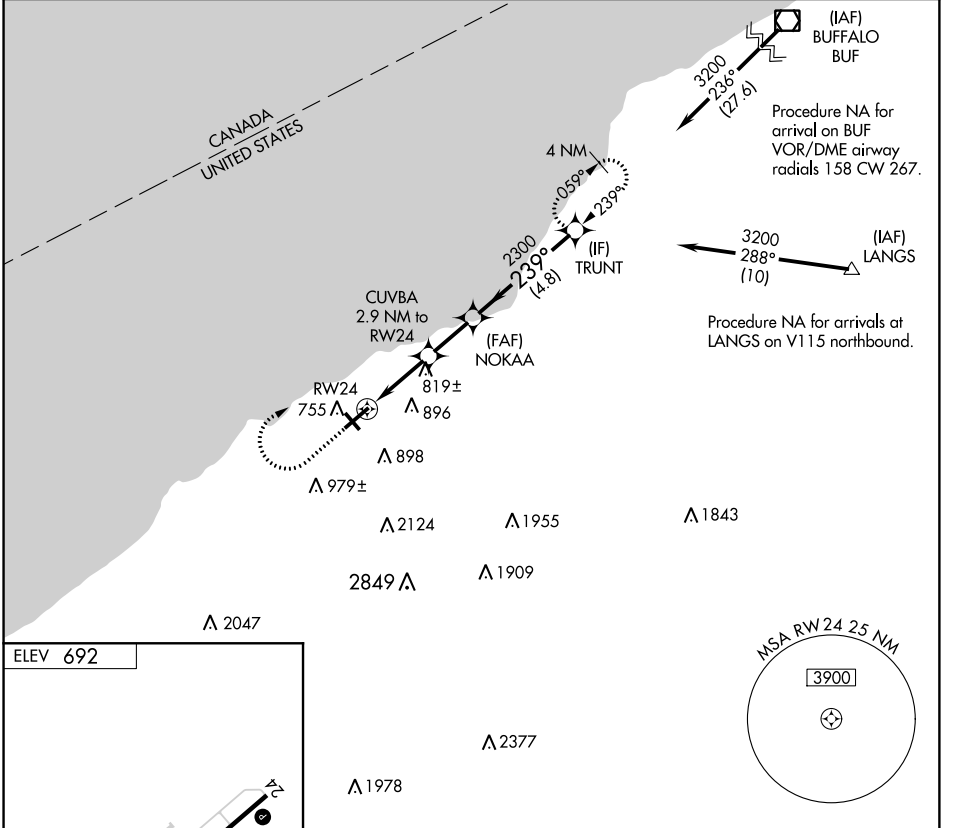
APP CRS <b>239°</b>	Rwy Idg TDZE Apt Elev	<b>N/A</b> <b>N/A</b> <b>692</b>
------------------------	-----------------------------	--

# RNAV (GPS)-A

CHAUTAUGUA COUNTY/DUNKIRK (DKK)

<p><b>⚠</b> DME/DME RNP-0.3 NA. Circling Rwy 6, 24, 33 NA at night. <b>❄</b> -20°C Rwy 24 helicopter visibility reduction below 1 SM NA.</p>	<p><b>MISSED APPROACH:</b> Climb to 1900 then climbing right turn to 3200 direct TRUNT and hold.</p>
--	--

<p>ASOS <b>119.275</b></p>	<p>BUFFALO APP CON <b>126.5 317.6</b></p>	<p>UNICOM <b>123.075 (CTAF)</b> <b>0</b></p>
--------------------------------	---	--



	1900	3200	TRUNT	Visual Segment - Obstacles.
				TRUNT <b>3200</b>
			NOKAA	
			CUVBA 2.9 NM to RW24	
			RW24	
			<b>2300</b>	
			<b>1440</b>	
	2.9 NM	2.1 NM	4.8 NM	
CATEGORY	A	B	C	D
<b>C</b> CIRCLING	1200-1 508 (600-1)	1300-1 608 (700-1)	1640-2¾ 948 (1000-2¾)	2140-3 1448 (1500-3)

NE-2, 15 AUG 2019 to 12 SEP 2019

NE-2, 15 AUG 2019 to 12 SEP 2019