

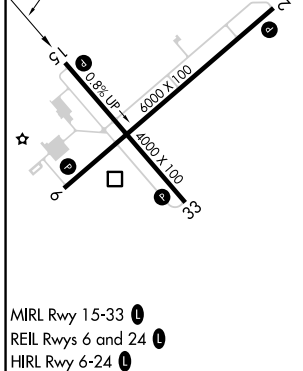
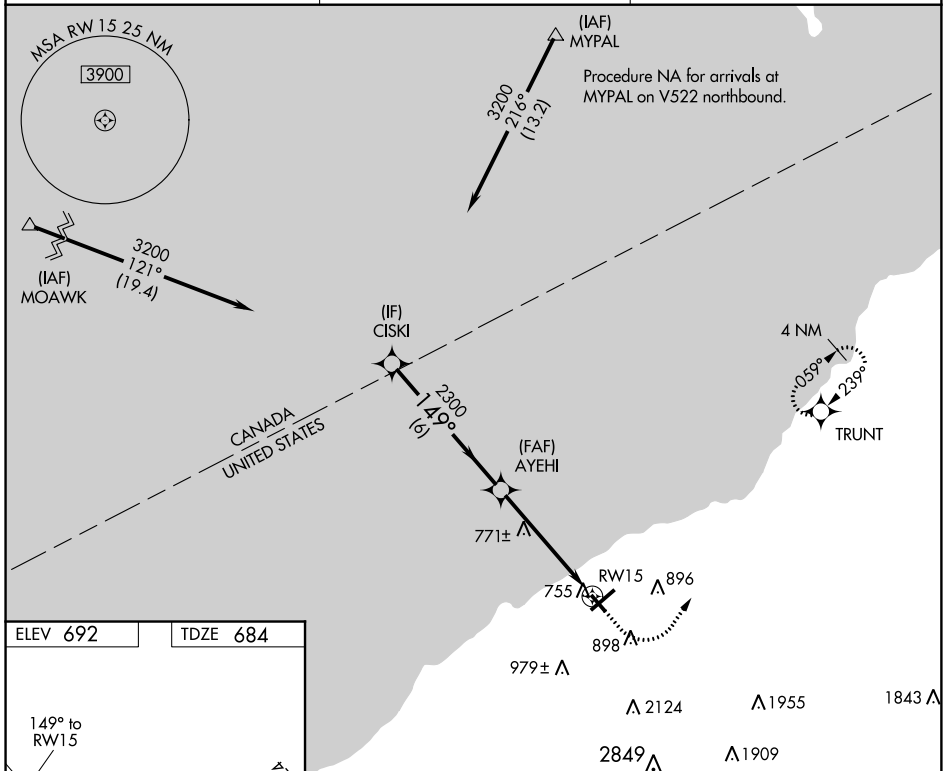
APP CRS <b>149°</b>	Rwy Idg <b>4000</b>
	TDZE <b>684</b>
	Apt Elev <b>692</b>

# RNAV (GPS) RWY 15

CHAUTAUGUA COUNTY/DUNKIRK (DKK)

DME/DME RNP-0.3 NA. Rwy 15 helicopter visibility reduction below 3/4 SM NA. Circling Rwy 6, 24, 33 NA at night. -20°C	MISSED APPROACH: Climb to 1100 then climbing left turn to 3200 direct TRUNT and hold.
--	---

ASOS <b>119,275</b>	BUFFALO APP CON <b>126.5 317.6</b>	UNICOM <b>123.075 (CTAF) 0</b>
------------------------	---------------------------------------	-----------------------------------



Visual Segment - Obstacles.			
3200	2300	1100	3200
149°			
6 NM	3.9 NM	1.1 NM	
CISKI	AYEHI		TRUNT
		1.1 NM to RWY 15	
		RWY 15	
CATEGORY	A	B	C
LNAV MDA	1060-1 376 (400-1)		
CIRCLING	1200-1 508 (600-1)	1300-1 608 (700-1)	1640-2 3/4 948 (1000-2 3/4)
			2140-3 1448 (1500-3)

NE-2, 15 AUG 2019 to 12 SEP 2019

NE-2, 15 AUG 2019 to 12 SEP 2019