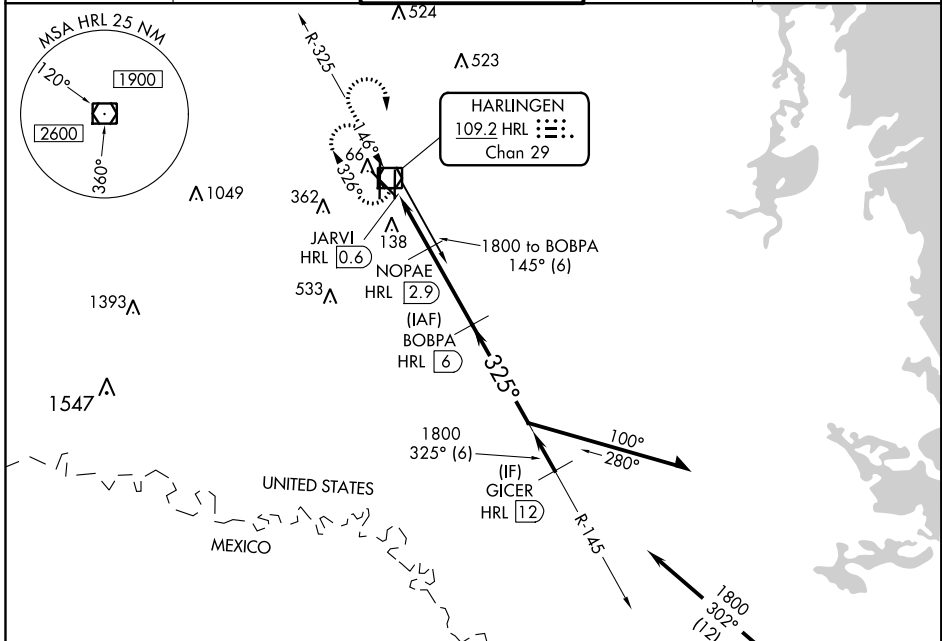


VOR/DME HRL	APP CRS	Rwy Idg TDZE	7257 36
109.2 Chan 29	325°	Apt Elev	36

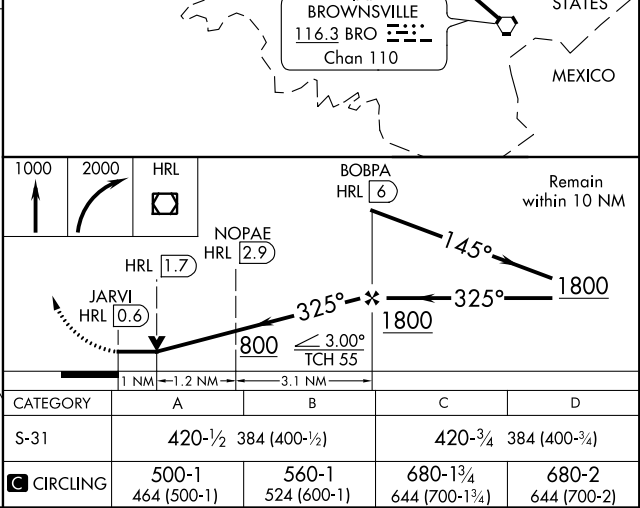
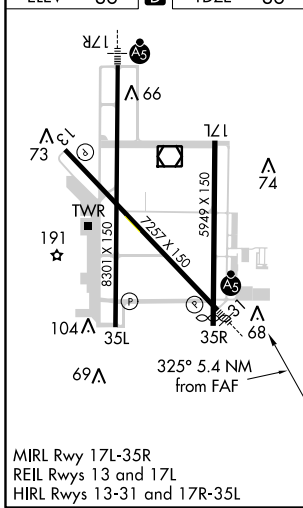
VOR Z RWY 31

VALLEY INTL (H.R.L.)

DME required.		MALSR		MISSED APPROACH: Climb to 1000 then climbing right turn to 2000 direct HRL VOR/DME and hold.	
ATIS 124.85	VALLEY APP CON 120.7 279.5	HARLINGEN TOWER * 119.3 (CTAF) 317.6	GND CON 121.7	UNICOM 122.95	



ELEV 36	D	TDZE 36
---------	----------	---------



SC-3, 15 AUG 2019 to 12 SEP 2019

SC-3, 15 AUG 2019 to 12 SEP 2019