

WAAS CH 50131 W17A	APP CRS 176°	Rwy Idg 8301 TDZE 35 Apt Elev 36
--	------------------------	---

RNAV (GPS) Y RWY 17R

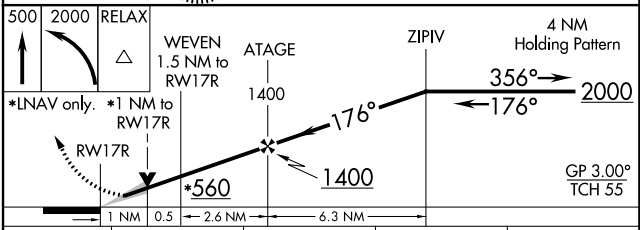
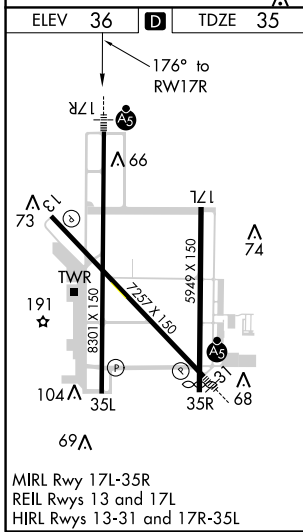
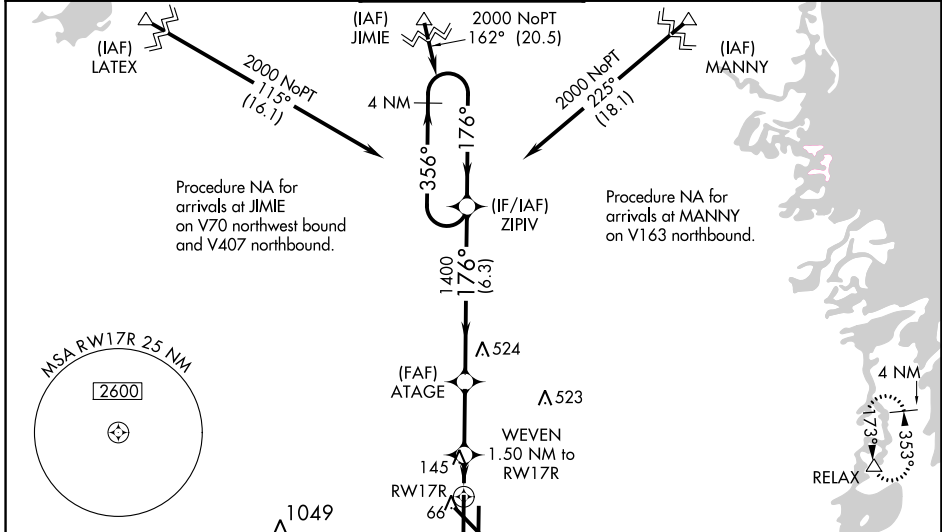
VALLEY INTL (H.R.L.)

⚠ For uncompensated Baro-VNAV systems, LNAV/VNAV NA below 2°C (36°F) or above 54°C (130°F). DME/DME RNP-0.3 NA. When local altimeter setting not received, use Port Isabel altimeter setting and increase all DA 42 feet and all MDA 60 feet; increase LNAV Cats C and D visibility to RVR 4000, and Circling Cat D visibility ¼ mile. For inoperative MALSR, increase LNAV/VNAV all Cats visibility to RVR 4000, LNAV all Cats visibility to RVR 5500. For inoperative MALSR, when using Port Isabel altimeter setting, increase LNAV/VNAV all Cats visibility to RVR 4500, LNAV Cats A and B visibility to RVR 5500 and Cats C and D visibility to ¼ mile. Baro-VNAV NA with Port Isabel altimeter setting. VDP NA with Port Isabel altimeter setting. ** RVR 1800 authorized with use of FD or AP or HUD to DA, NA when using Port Isabel altimeter setting.



MISSED APPROACH:
Climb to 500 then climbing left turn to 2000 direct RELAX and hold

ATIS 124.85	VALLEY APP CON 120.7 279.5	HARLINGEN TOWER★ 119.3 (CTAF) 0 317.6	GND CON 121.7	UNICOM 122.95
-----------------------	--------------------------------------	---	-------------------------	-------------------------



CATEGORY	A	B	C	D
LPV DA **	235/24		200 (200-½)	
LNAV/VNAV DA	285/24		250 (300-½)	
LNAV MDA	400/24	365 (400-½)	400/35	365 (400-¾)
CIRCLING	500-1	464 (500-1)	500-1½ 464 (500-1½)	680-2 644 (700-2)

SC-3, 15 AUG 2019 to 12 SEP 2019

SC-3, 15 AUG 2019 to 12 SEP 2019