

APP CRS	Rwy Idg	<b>8301</b>
<b>356°</b>	TDZE	<b>36</b>
	Apt Elev	<b>36</b>

# RNAV (RNP) Z RWY 35L

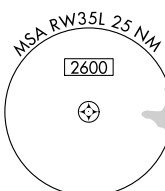
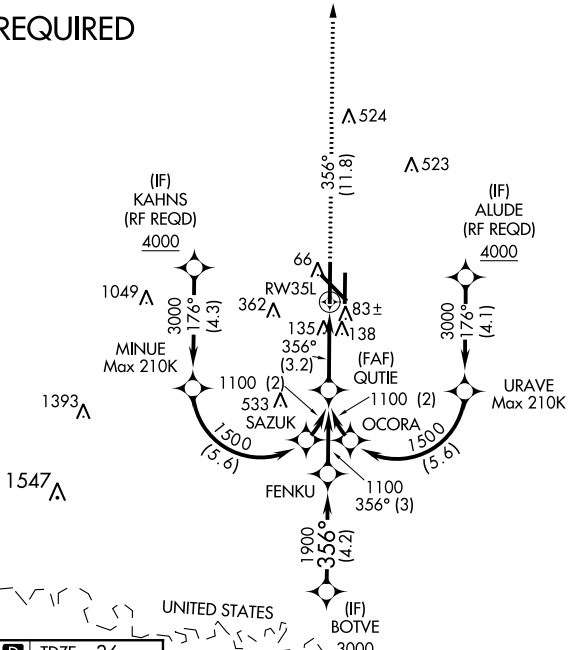
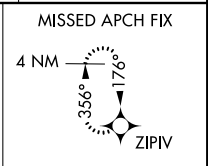
VALLEY INTL (H.R.L.)

▼ For uncompensated Baro-VNAV systems, procedure NA below 2°C (36°F) or above 54°C (130°F). When VGSI inoperative procedure NA at night. GPS required.

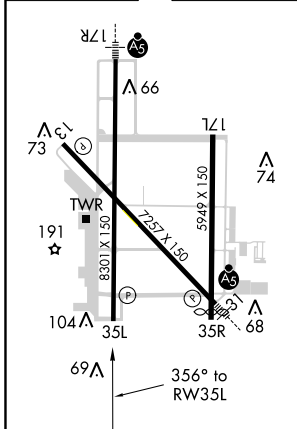
MISSED APPROACH: Climb to 2000 on track 356° to ZIPIV and hold.

ATIS <b>124.85</b>	VALLEY APP CON <b>120.7 279.5</b>	HARLINGEN TOWER★ <b>119.3(CTAF) 0 317.6</b>	GND CON <b>121.7</b>	UNICOM <b>122.95</b>
-----------------------	--------------------------------------	--	-------------------------	-------------------------

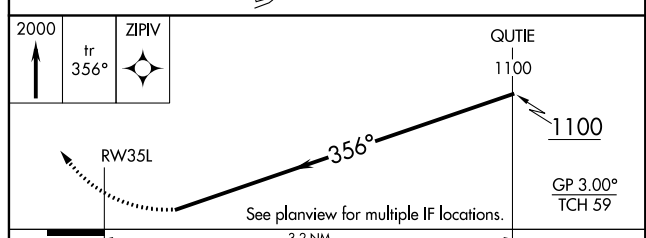
## RADAR REQUIRED



ELEV 36	<b>D</b>	TDZE 36
---------	----------	---------



MIRL Rwy 17L-35R  
REIL Rwys 13 and 17L  
HIRL Rwys 13-31 and 17R-35L



CATEGORY	A	B	C	D
RNP 0.14 DA		334-1	298 (300-1)	
RNP 0.29 DA		388-1½	352 (400-1½)	
RNP 0.30 DA		479-1½	443 (500-1½)	

## AUTHORIZATION REQUIRED

SC-3, 15 AUG 2019 to 12 SEP 2019

SC-3, 15 AUG 2019 to 12 SEP 2019