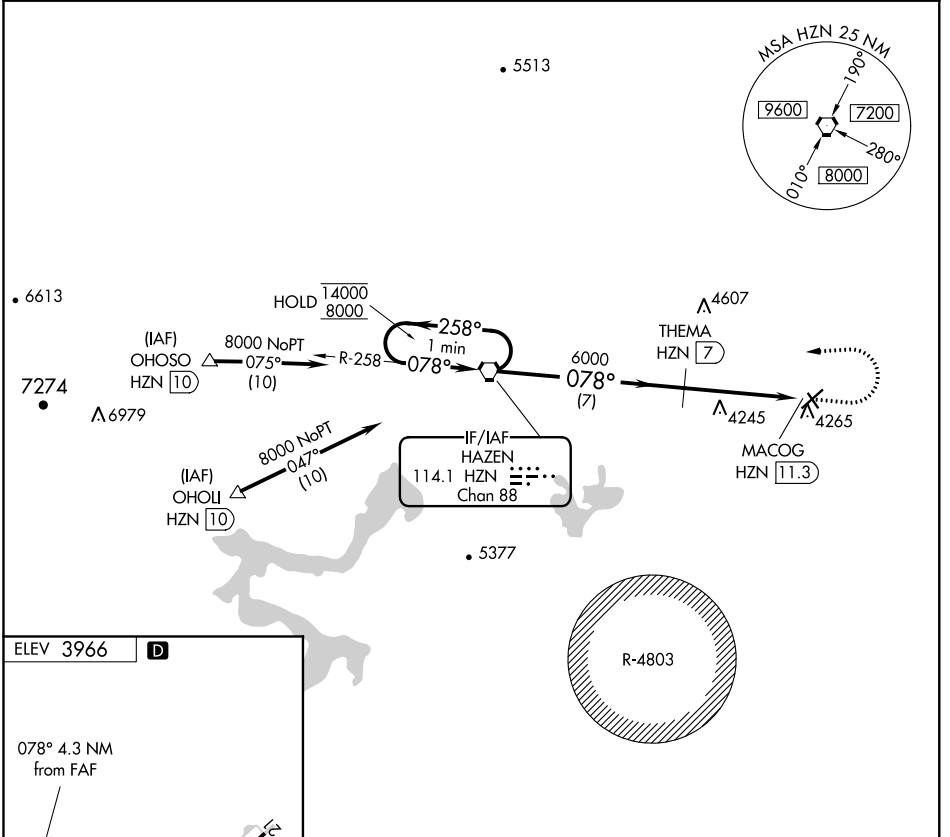


VORTAC HZN 114.1 Chan 88	APP CRS 078°	Rwy Idg TDZE N/A Apt Elev 3966
--	------------------------	--

VOR-B
FALLON MUNI (F'LX)

DME required.		MISSED APPROACH: Climb to 6100 then climbing left turn to 8000 direct HZN VORTAC and hold.		
AWOS-AV 118.25	NAVY FALLON ATIS ★ 370.925	NAVY FALLON APP CON ★ 120.85 360.2	OAKLAND CENTER 128.8 285.5	UNICOM 122.8 (CTAF)



SW-4, 15 AUG 2019 to 12 SEP 2019

SW-4, 15 AUG 2019 to 12 SEP 2019

