

WAAS CH <b>78108</b> <b>W24A</b>	APP CRS <b>237°</b>	Rwy Idg <b>5201</b> TDZE <b>1201</b> Apt Elev <b>1212</b>
--	------------------------	---

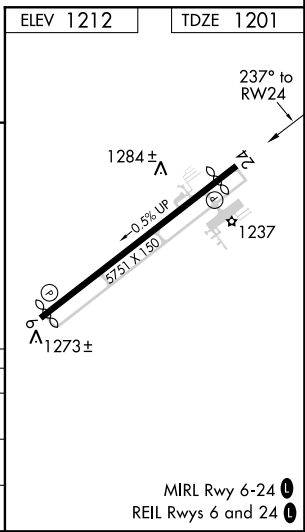
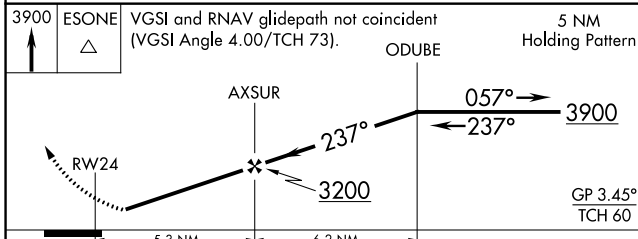
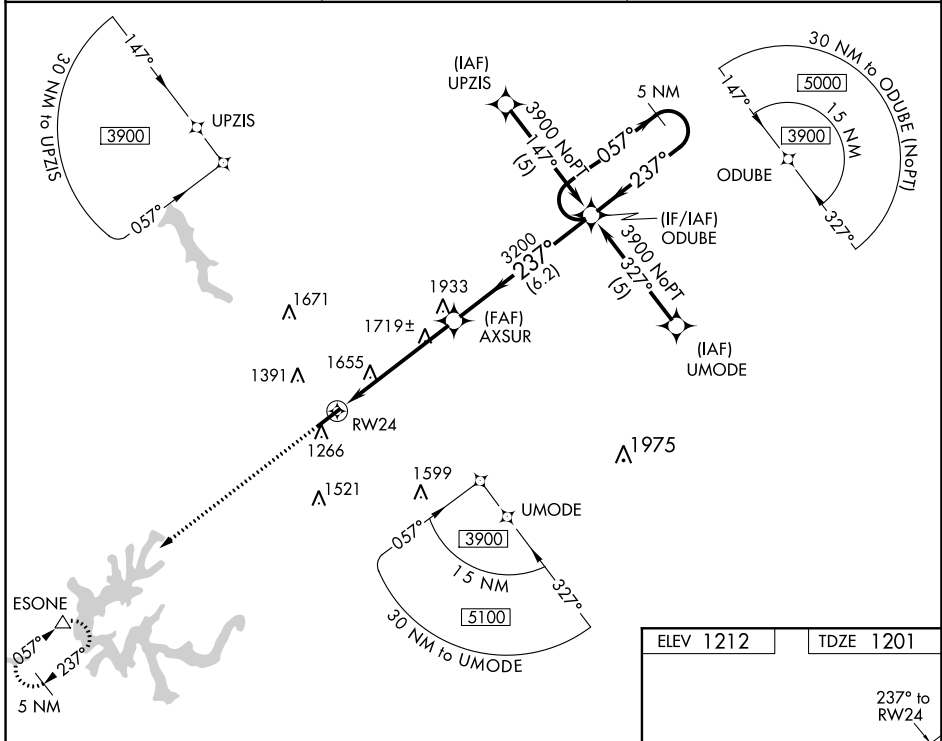
# RNAV (GPS) RWY 24

LONDON-CORBIN AIRPORT-MAGEE FIELD (LOZ)

**▽** DME/DME RNP-0.3 NA. Visibility reduction by helicopters NA.  
**▲** When local altimeter setting not received, use Somerset altimeter setting and increase all DA/MDAs 100 feet, increase LPV all Cats, LNAV Cats C/D, and circling Cats C/D visibilities ¼ mile.

MISSED APPROACH: Climb to 3900 direct ESONE and hold.

ASOS <b>119.075</b>	INDIANAPOLIS CENTER <b>124.625 371.925</b>	UNICOM <b>123.0</b> (CTAF) <b>0</b>
------------------------	---	--



CATEGORY	A		B		C		D	
	LPV	DA	LPV	DA	LPV	DA	LPV	DA
LPV	1980-1	779 (800-1)	1980-1¼	779 (800-1¼)	1980-2¼	779 (800-2¼)	1980-2½	779 (800-2½)
LNAV	1980-1	768 (800-1)	1980-1¼	768 (800-1¼)	2040-2½	828 (900-2½)	2040-2¾	828 (900-2¾)
CIRCLING	1980-1	768 (800-1)	1980-1¼	768 (800-1¼)	2040-2½	828 (900-2½)	2040-2¾	828 (900-2¾)

MIRL Rwy 6-24 **0**  
 REIL Rws 6 and 24 **0**

SE-1, 15 AUG 2019 to 12 SEP 2019

SE-1, 15 AUG 2019 to 12 SEP 2019

# RNAV (GPS) RWY 24