

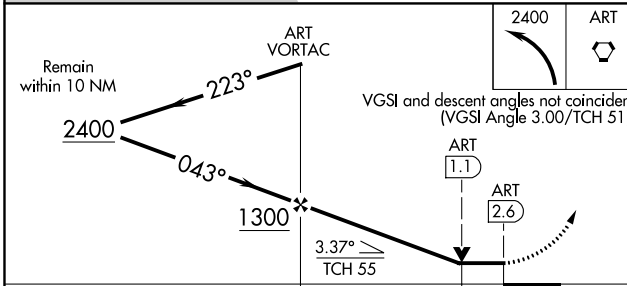
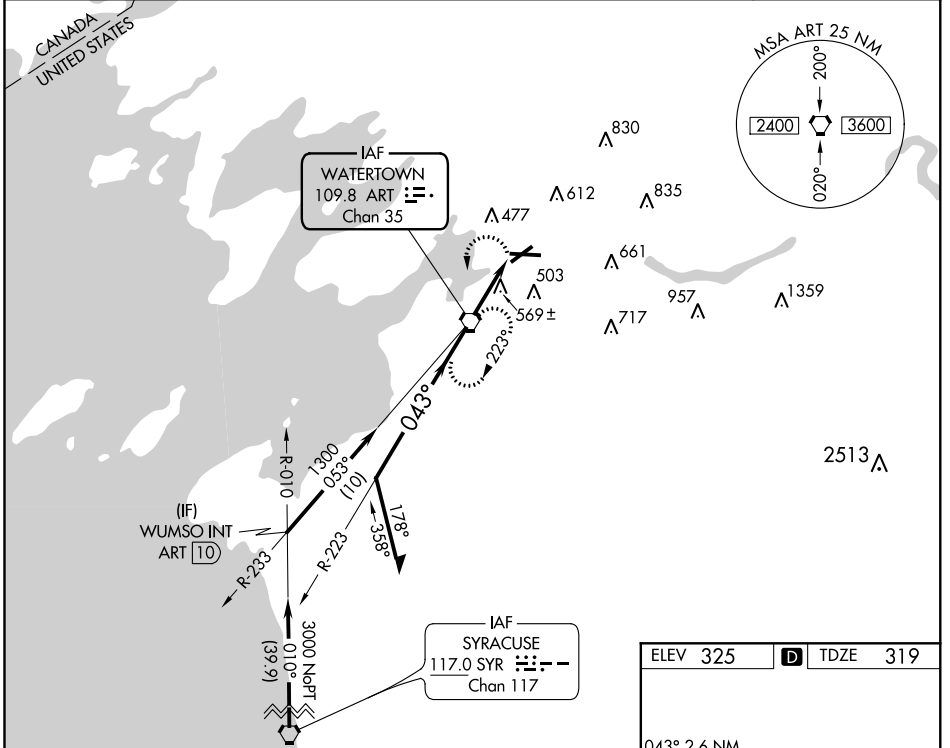
VORTAC ART 109.8 Chan 35	APP CRS 043°	Rwy Idg 4784 TDZE 319 Apt Elev 325
--	------------------------	---

VOR RWY 7

WATERTOWN INTL (ART)

<p>-37°C</p>		<p>MISSED APPROACH: Climbing left turn to 2400 direct ART VORTAC and hold, continue climb-in-hold to 2400.</p>
--------------	--	--

ASOS 132.325	WHEELER-SACK ATIS 119.525	WHEELER-SACK APP CON 124.875 257.6	CLNC DEL 120.8	UNICOM 123.0 (CTAF)
------------------------	-------------------------------------	--	--------------------------	-------------------------------



ELEV 325	TDZE 319
----------	----------

Diagram showing final approach to RWY 28. Key features: 043° 2.6 NM from FAF, 0.3% UP, 499 x 150, 7001 x 150, 0.3% UP, 28.

REIL Rwy 28
HIRL Rwy 7-25
MIRL Rwy 10-28

FAF to MAP 2.6 NM

Knots	60	90	120	150	180
Min:Sec	2:36	1:44	1:18	1:02	0:52

CATEGORY	A	B	C	D
S-7	840-1 521 (600-1)		840-1½ 521 (600-1½)	
CIRCLING	960-1 635 (700-1)		980-1¾ 655 (700-1¾)	1000-2¼ 675 (700-2¼)

NE-2, 15 AUG 2019 to 12 SEP 2019

NE-2, 15 AUG 2019 to 12 SEP 2019