

WAAS CH 82322 W28A	APP CRS 285°	Rwy Idg TDZE Apt Elev	7001 331 331
--	------------------------	-----------------------------	---

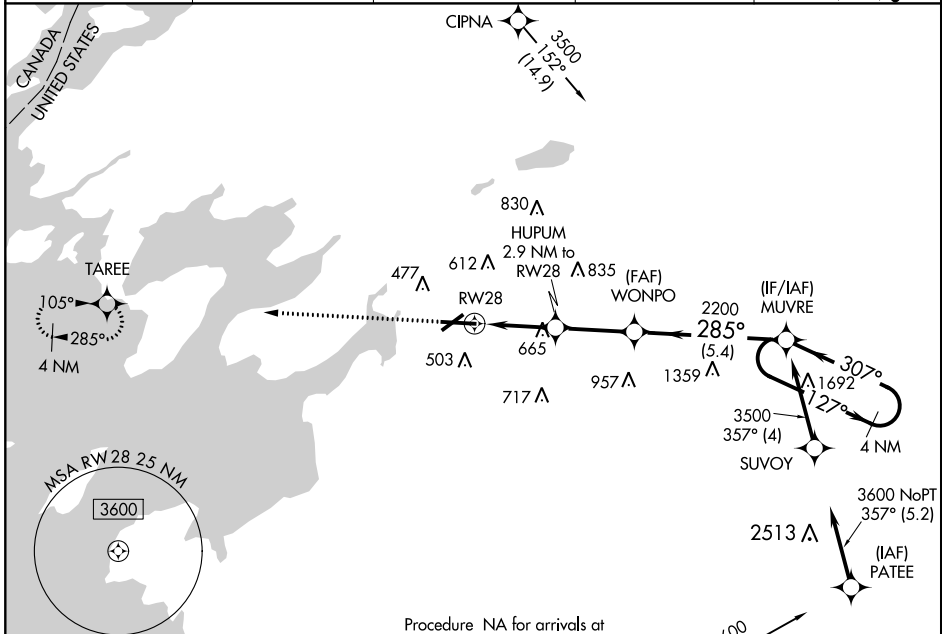
RNAV (GPS) RWY 28

WATERTOWN INTL (ART)

⚠ For uncompensated Baro-VNAV systems, procedure NA below -20°C (-4°F) or above 54°C (130°F). Baro-VNAV and VDP NA when using Wheeler-Sack AAF altimeter setting. DME/DME RNP-0.3 NA. When local altimeter setting not received, use Wheeler-Sack AAF altimeter setting and increase LPV DA to 663 feet and all visibility to 1½ SM; LNAV/VNAV DA to 934 feet, and all visibility to 2½ SM. Increase all MDA 100 feet and LNAV Cat C/D visibility ½ SM, Circling Cat C/D ¼ SM. Rwy 28 helicopter visibility reduction below ¾ SM NA.

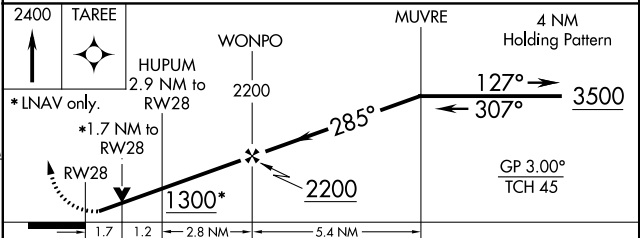
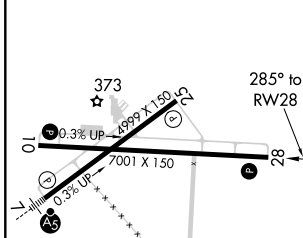
⚠ MISSED APPROACH: Climb to 2400 direct TAREE and hold.

ASOS 132.325	WHEELER-SACK ATIS 119.525	WHEELER-SACK APP CON 124.875 257.6	CLNC DEL 120.8	UNICOM 123.0 (CTAF) 0
------------------------	-------------------------------------	--	--------------------------	---------------------------------



Procedure NA for arrivals at LIDLE on V145 southbound.

ELEV 331	D	TDZE 331
----------	----------	----------



CATEGORY	A	B	C	D
LPV DA		581-3/4	250 (300-3/4)	
LNAV/VNAV DA		852-13/4	521 (600-13/4)	
LNAV MDA	920-1	589 (600-1)	920-13/4	589 (600-13/4)
CIRCLING	920-1 589 (600-1)	960-1 629 (700-1)	980-13/4 649 (700-13/4)	1080-21/2 749 (800-21/2)

- REIL Rwy 28 **0**
- HIRL Rwy 7-25 **0**
- MIRL Rwy 10-28 **0**

NE-2, 15 AUG 2019 to 12 SEP 2019

NE-2, 15 AUG 2019 to 12 SEP 2019