

VORTAC MOT <b>117.1</b> Chan <b>118</b>	APP CRS <b>067°</b>	Rwy Idg <b>5955</b> TDZE <b>1712</b> Apt Elev <b>1716</b>
---	------------------------	---

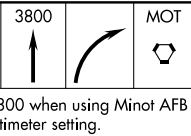
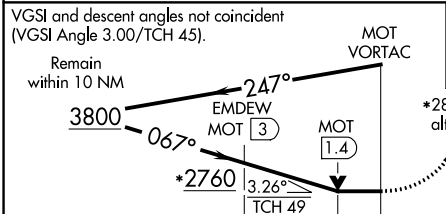
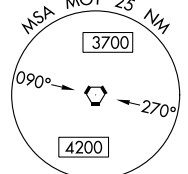
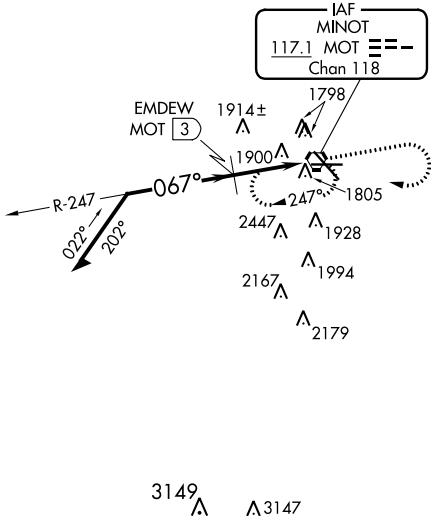
# VOR RWY 8

MINOT INTL (MOT)

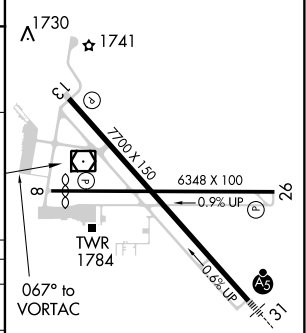
**⚠** VDP NA with Minot AFB altimeter setting. When local altimeter setting not received, use Minot AFB altimeter setting and increase all MDA 40 feet; EMDEW FIX minimums increase S-8 and Circling Cat C visibility ¼ mile.

**MISSED APPROACH:** Climb to 3800 then right turn direct MOT VORTAC and hold.

ASOS <b>118.725</b>	MINOT APP CON * <b>119.6 363.8</b>	MAGIC CITY TOWER * <b>118.2 (CTAF) 251.125</b>	GND CON <b>121.9</b>	UNICOM <b>122.95</b>
------------------------	---------------------------------------	---	-------------------------	-------------------------



ELEV 1716	<b>D</b> TDZE 1712
-----------	--------------------



CATEGORY	A	B	C	D
S-8	2760-1¼ 1048 (1100-1¼)	2760-1½ 1048 (1100-1½)	2760-3	1048 (1100-3)
CIRCLING	2760-1¼ 1044 (1100-1¼)	2760-1½ 1044 (1100-1½)	2760-3	1044 (1100-3)
EMDEW FIX MINIMUMS				
S-8	2180-1 468 (500-1)	2180-1¼ 468 (500-1¼)	2180-1½ 468 (500-1½)	2180-1½ 468 (500-1½)
CIRCLING	2200-1 484 (500-1)	2280-1½ 564 (600-1½)	2280-1½ 564 (600-1½)	2280-2 564 (600-2)

REIL Rwy 13  
REIL Rwys 8 and 26  
HIRL Rwys 8-26 and 13-31

NC-1, 15 AUG 2019 to 12 SEP 2019

NC-1, 15 AUG 2019 to 12 SEP 2019