

WAAS CH 70399 W13A	APP CRS 128°	Rwy Idg TDZE Apt Elev	7700 1702 1716
--	------------------------	-----------------------------	---

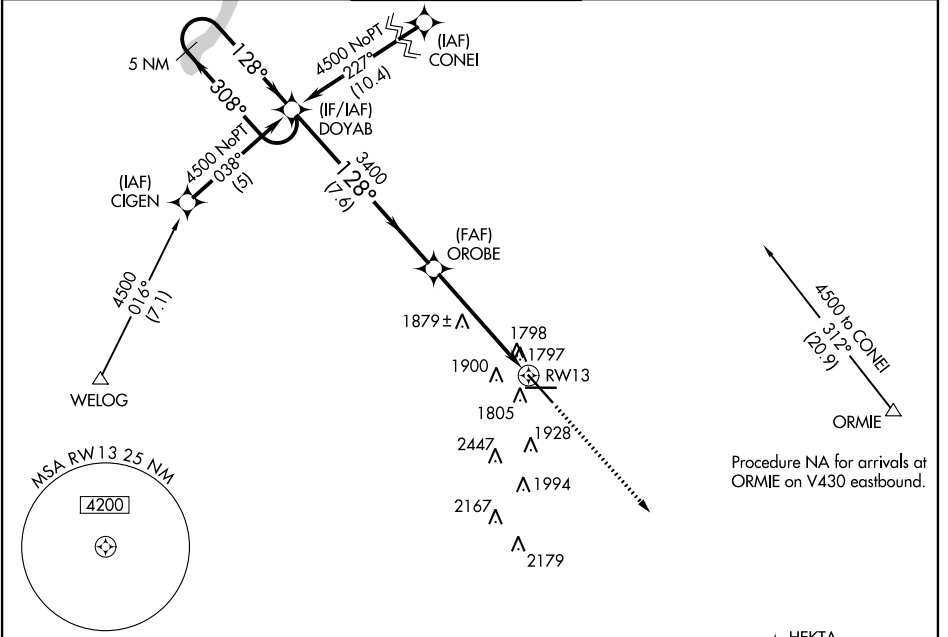
RNAV (GPS) RWY 13

MINOT INTL (MOT)

⚠ If local altimeter not received, use Minot AFB altimeter setting and increase all DAs/MDAs 40 feet. Baro-VNAV NA below -18°C (0°F). VDP and Baro-VNAV NA when using Minot AFB altimeter setting. DME/DME RNP-0.3 NA.

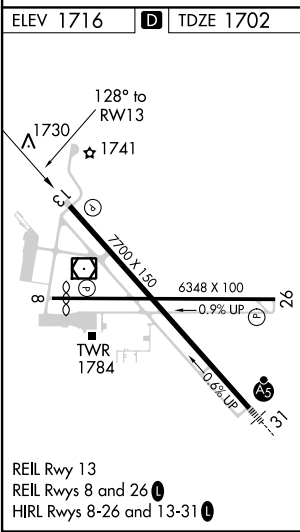
MISSED APPROACH: Climb to 4000 direct HEKTA and hold.

ASOS 118.725	MINOT APP CON * 119.6 363.8	MAGIC CITY TOWER * 118.2 (CTAF) 251.125	GND CON 121.9	UNICOM 122.95
------------------------	---------------------------------------	---	-------------------------	-------------------------



NC-1, 15 AUG 2019 to 12 SEP 2019

NC-1, 15 AUG 2019 to 12 SEP 2019



3149		3147		5 NM		HEKTA	
5 NM Holding Pattern DOYAB		OROBE		4000		HEKTA	
4500 ← 308°		→ 128°		→ 128°		* 1.2 NM to RWY 13	
GP 3.00° TCH 49		3400		RWY 13		* LNAV only.	
		7.6 NM		3.9 NM		1.2	
CATEGORY	A	B	C	D			
LPV DA	2021-1				319 (400-1)		
LNAV/VNAV DA	2181-1¾				479 (500-1¾)		
LNAV MDA	2140-1	438 (500-1)	2140-1¼	438 (500-1¼)	2140-1½	438 (500-1½)	
CIRCLING	2200-1	484 (500-1)	2280-1½	564 (600-1½)	2280-2	564 (600-2)	