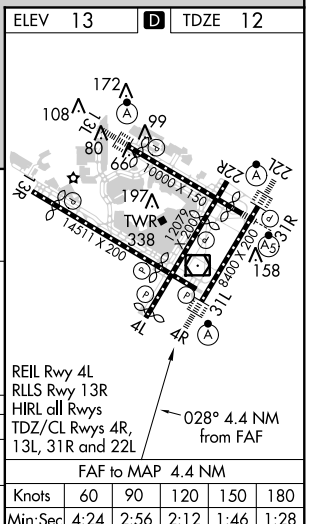
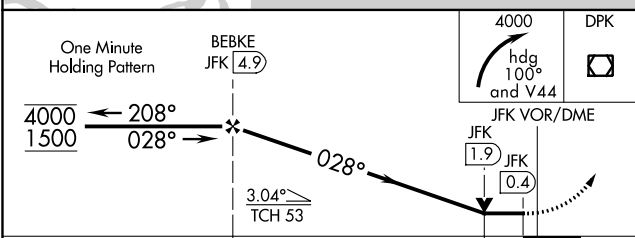
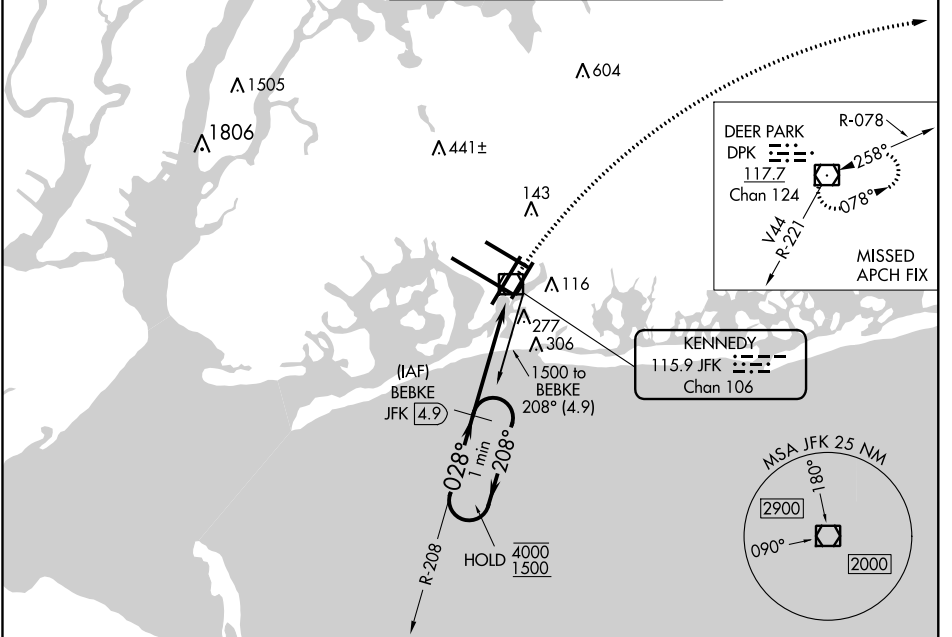


VOR/DME JFK <b>115.9</b> Chan <b>106</b>	APP CRS <b>028°</b>	Rwy Idg <b>8400</b> TDZE <b>12</b> Apt Elev <b>13</b>
--	------------------------	---

# VOR RWY 4R

JOHN F KENNEDY INTL (JFK)

DME or RADAR required for procedure entry.		ALSIF-2	MISSED APPROACH: Climbing right turn to 4000 via heading 100° and V44 to DPK VOR/DME and hold.		
D-ATIS (ARR/DEP) (ARR-NE) (ARR-SW) <b>128.725 117.7 115.4</b>	NEW YORK APP CON <b>128.125 269.0</b>	KENNEDY TOWER Rwys 4R/22L and 13L/31R <b>119.1 281.55</b> Rwys 4L/22R and 13R/31L <b>123.9 281.55</b>	GND CON <b>121.9 348.6</b>	CLNC DEL <b>135.05 348.6</b>	CPDLC



NE-2. 15 AUG 2019 to 12 SEP 2019

NE-2. 15 AUG 2019 to 12 SEP 2019