

VOR/DME JFK 115.9 Chan 106	APP CRS 052°	Rwy Idg 11010 TDZE 13 Apt Elev 13
--	------------------------	--

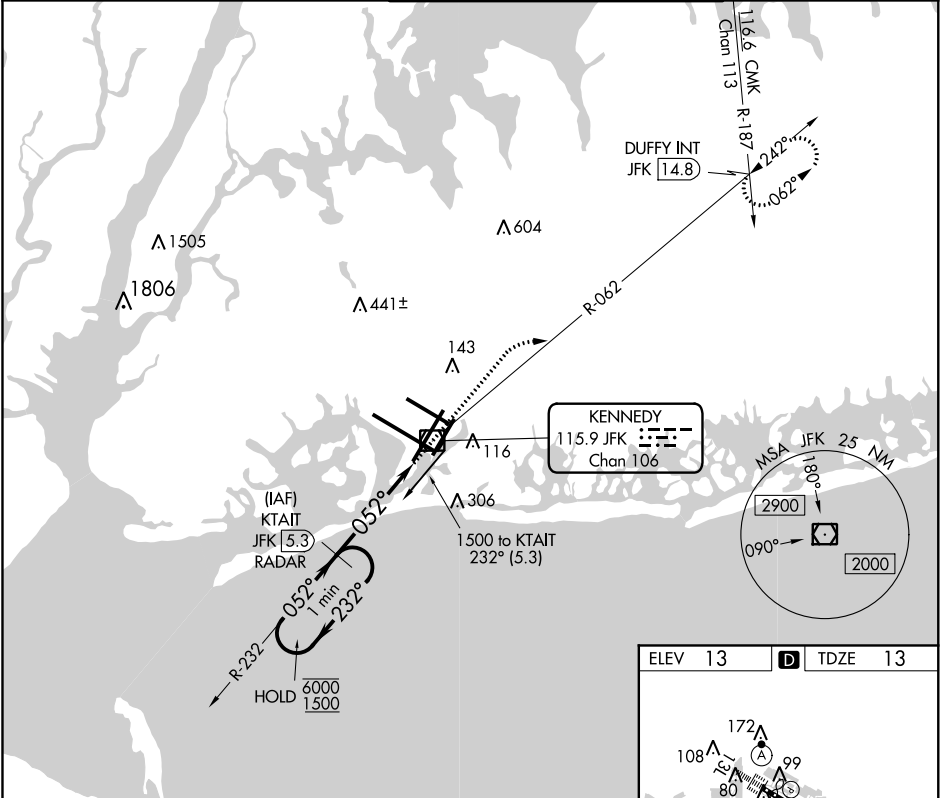
VOR RWY 4L

JOHN F KENNEDY INTL (JFK)

DME or RADAR required for procedure entry.

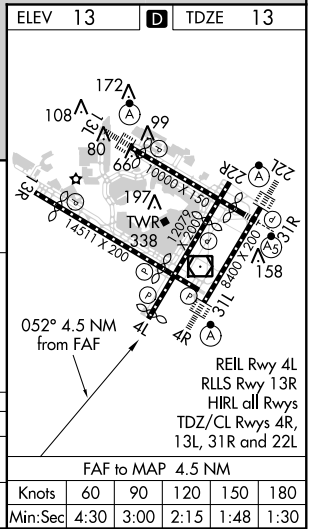
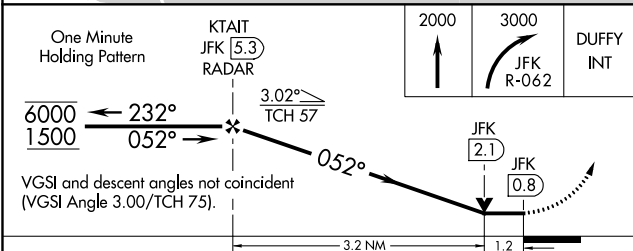
MISSED APPROACH: Climb to 2000 then climbing right turn to 3000 on JFK VOR/DME R-062 to DUFFY INT/JFK 14.8 DME and hold.

D-ATIS (ARR/DEP) (ARR-NE) (ARR-SW) 128.725 117.7 115.4	NEW YORK APP CON 128.125 269.0	KENNEDY TOWER Rwys 4R/22L and 13L/31R 119.1 281.55 Rwys 4L/22R and 13R/31L 123.9 281.55	GND CON 121.9 348.6	CLNC DEL 135.05 348.6	CPDLC
---	--	---	-------------------------------	---------------------------------	-------



NE-2, 15 AUG 2019 to 12 SEP 2019

NE-2, 15 AUG 2019 to 12 SEP 2019



CATEGORY	A	B	C	D
S-4L	480/55	467 (500-1)	480-1 ³ / ₈	467 (500-1 ³ / ₈)
C CIRCLING	640-1	627 (700-1)	640-1 ³ / ₄ 627 (700-1 ³ / ₄)	660-2 647 (700-2)

FAF to MAP 4.5 NM					
Knots	60	90	120	150	180
Min:Sec	4:30	3:00	2:15	1:48	1:30