

WAAS CH <b>77519</b> <b>W04A</b>	APP CRS <b>044°</b>	Rwy Idg <b>11010</b> TDZE <b>13</b> Apt Elev <b>13</b>
----------------------------------------	------------------------	--------------------------------------------------------------

# RNAV (GPS) Y RWY 4L

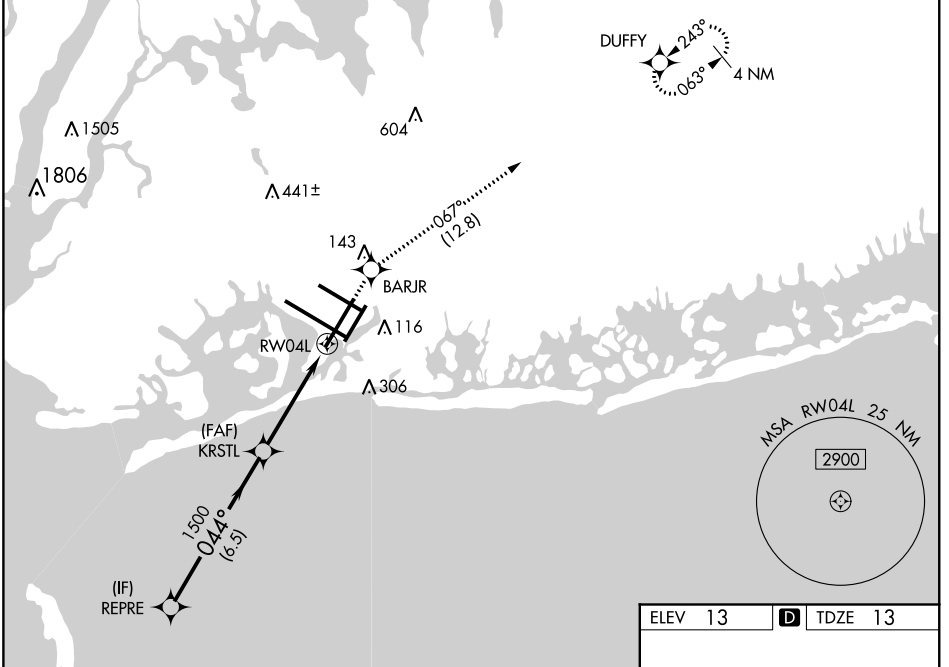
JOHN F KENNEDY INTL (JFK)

RNP APCH.

▼ For uncompensated Baro-VNAV systems, LNAV/VNAV NA below -12°C (11°F) or above 54°C (130°F). Simultaneous approach authorized. Use of FD or AP providing RNAV track guidance required during simultaneous operations. LNAV procedure NA during simultaneous operations.

MISSED APPROACH: (Do not exceed 210K until BARJR) Climb to 3000 direct BARJR and track 067° to DUFFY and hold.

D-ATIS (ARR/DEP)(ARR-NE) (ARR-SW) <b>128.725 117.7 115.4</b>	NEW YORK APP CON <b>128.125 269.0</b>	KENNEDY TOWER Rwys 4R/22L and 13L/31R <b>119.1 281.55</b> Rwys 4L/22R and 13R/31L <b>123.9 281.55</b>	GND CON <b>121.9 348.6</b>	CLNC DEL <b>135.05 348.6</b>	CPDLC
--------------------------------------------------------------------	------------------------------------------	-------------------------------------------------------------------------------------------------------------	-------------------------------	---------------------------------	-------

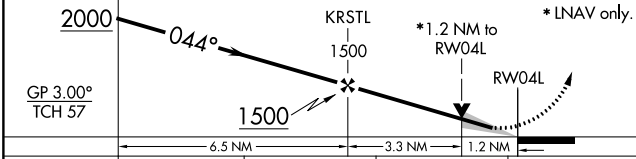


NE-2, 15 AUG 2019 to 12 SEP 2019

NE-2, 15 AUG 2019 to 12 SEP 2019

VGSI and RNAV glidepath not coincident (VGSI Angle 3.00/TCH 75).

3000 BARJR tr 067° DUFFY



CATEGORY	A	B	C	D
LPV DA		232/40	219 (300-¾)	
LNAV/VNAV DA		329/50	316 (400-1)	
LNAV MDA	480/55	467 (500-1)	480-1⅜ 467 (500-1⅜)	
<b>C</b> CIRCLING	640-1	627 (700-1)	640-1¼ 627 (700-1¼)	660-2 647 (700-2)

