

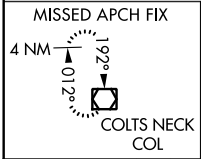
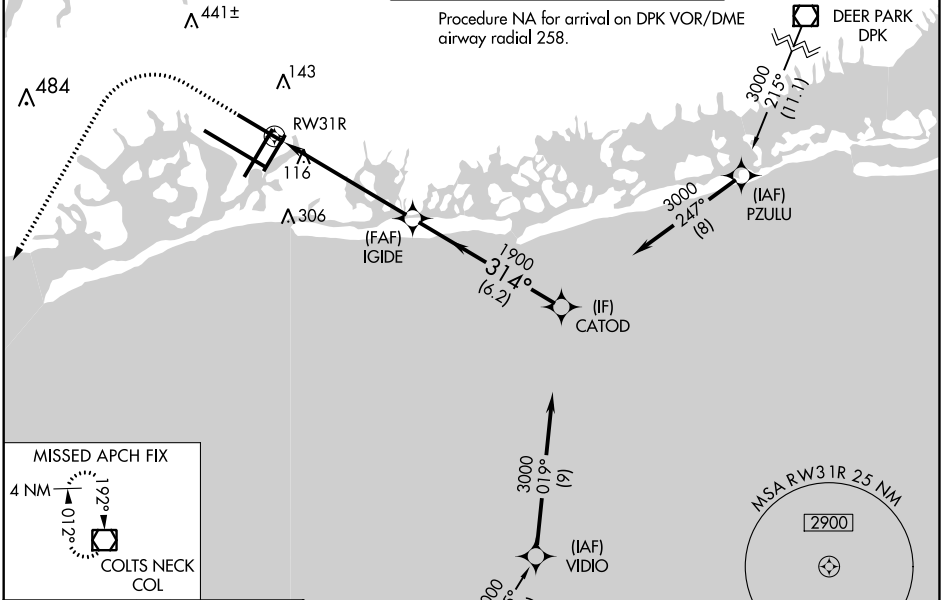
WAAS CH 45519 W31B	APP CRS 314°	Rwy ldg 8486 TDZE 12 Apt Elev 13
--	------------------------	---

RNAV (GPS) Y RWY 31R

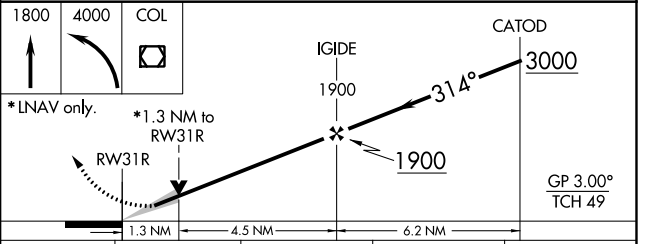
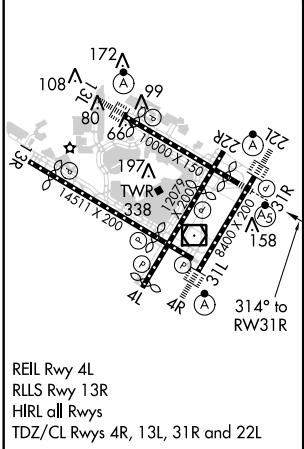
JOHN F KENNEDY INTL (JFK)

RNP APCH.	MALSR 	MISSED APPROACH: Climb to 1800 then climbing left turn to 4000 direct COL VOR/DME and hold.
<p>▼ For uncompensated Baro-VNAV systems, procedure NA below -12°C or above 54°C. Simultaneous approach authorized. Minimum altitude at CATOD 2000 when authorized by ATC. Use of FD or AP required during simultaneous operations. LNAV procedure NA during simultaneous operations.</p>		

D-ATIS (ARR/DEP) (ARR-NE) (ARR-SW) 128.725 117.7 115.4	NEW YORK APP CON 128.125 269.0	KENNEDY TOWER Rwys 4R/22L and 13L/31R 119.1 281.55 Rwys 4L/22R and 13R/31L 123.9 281.55	GND CON 121.9 348.6	CLNC DEL 135.05 348.6	CPDLC
---	--	---	-------------------------------	---------------------------------	-------



ELEV 13	D	TDZE 12
---------	----------	---------



CATEGORY	A	B	C	D
LPV DA		212/18	200 (200-½)	
LNAV/VNAV DA		369/35	357 (400-¾)	
LNAV MDA	460/24	448 (500-½)	460/45	448 (500-¾)
C CIRCLING	640-1	627 (700-1)	640-1¾ 627 (700-1¾)	660-2 647 (700-2)

NE-2: 15 AUG 2019 to 12 SEP 2019

NE-2: 15 AUG 2019 to 12 SEP 2019