

WAAS CH <b>97318</b> <b>W22A</b>	APP CRS <b>224°</b>	Rwy Idg TDZE Apt Elev	<b>8400</b> <b>12</b> <b>13</b>
--	------------------------	-----------------------------	---------------------------------------

# RNAV (GPS) Y RWY 22L

JOHN F KENNEDY INTL (JFK)

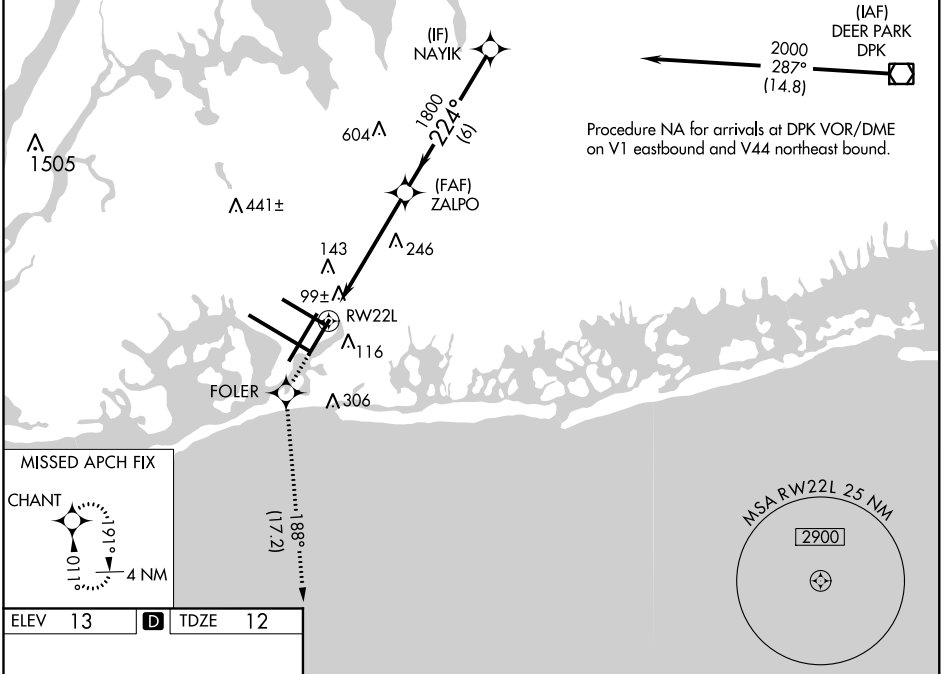
**RNAV APCH.**

▼ For uncompensated Baro-VNAV systems, LNAV/VNAV NA below -13°C (8°F) or above 54°C (130°F). Simultaneous approach authorized. LNAV procedure NA during simultaneous operations. Use of FD or AP providing RNAV track guidance required during simultaneous operations.

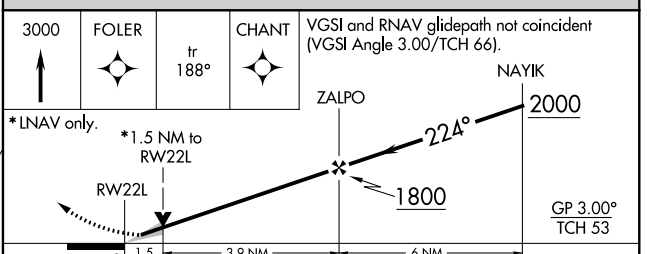
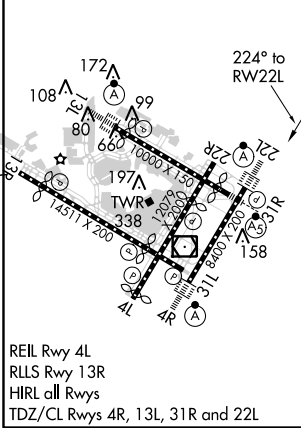
**ALSF-2**

MISSED APPROACH: Climb to 3000 direct FOLER and on track 188° to CHANT and hold.

D-ATIS (ARR/DEP) <b>128.725</b> (ARR-NE) <b>117.7</b> (ARR-SW) <b>115.4</b>	NEW YORK APP CON <b>128.125</b> <b>269.0</b>	KENNEDY TOWER Rwys 4R/22L and 13L/31R <b>119.1</b> <b>281.55</b> Rwys 4L/22R and 13R/31L <b>123.9</b> <b>281.55</b>	GND CON <b>121.9</b> <b>348.6</b>	CLNC DEL <b>135.05</b> <b>348.6</b>	CPDLC
--	---	---	--------------------------------------	--	-------



ELEV 13	<b>D</b>	TDZE 12
---------	----------	---------



CATEGORY	A	B	C	D
LPV DA	269/18		257 (300-½)	
LNAV/VNAV DA	419/50		407 (500-1)	
LNAV MDA	560/24	548 (600-½)	560/60	548 (600-1¼)
<b>C</b> CIRCLING	640-1	627 (700-1)	640-1¾ 627 (700-1¾)	660-2 647 (700-2)

NE-2, 15 AUG 2019 to 12 SEP 2019

NE-2, 15 AUG 2019 to 12 SEP 2019