

APP CRS	Rwy ldg	<b>11010</b>
<b>044°</b>	TDZE	<b>13</b>
	Apt Elev	<b>13</b>

# RNAV (RNP) Z RWY 4L

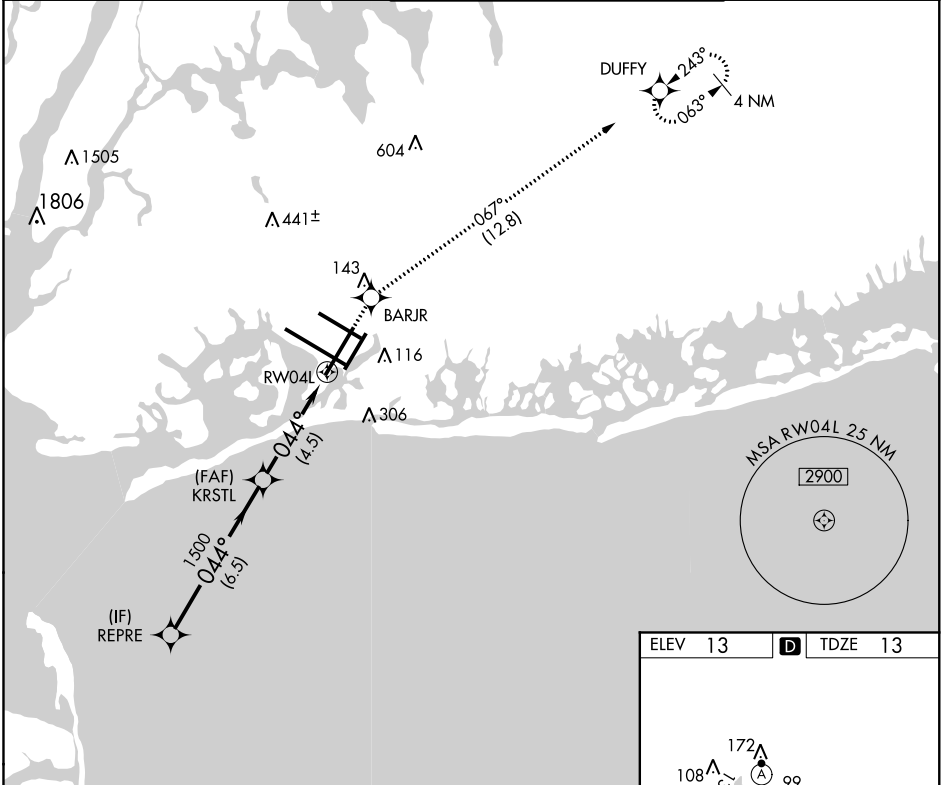
JOHN F KENNEDY INTL (JFK)

RNP AR APCH.

**▼** For uncompensated Baro-VNAV systems, procedure NA below -12°C (11°F) or above 54°C (130°F). Simultaneous approach authorized.

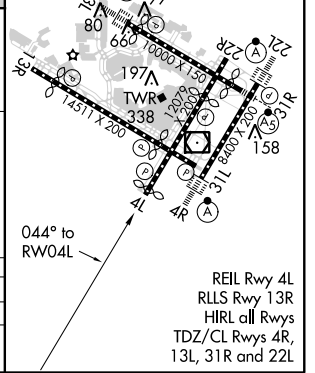
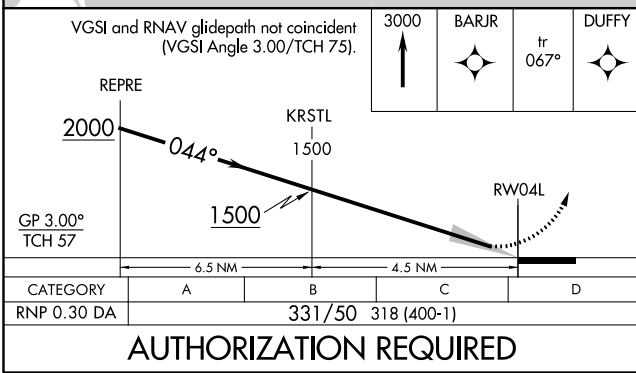
MISSED APPROACH: Climb to 3000 direct BARJR and track 067° to DUFFY and hold.

D-ATIS (ARR/DEP) (ARR-NE) (ARR-SW)	NEW YORK APP CON	KENNEDY TOWER Rwys 4R/22L and 13L/31R Rwys 4L/22R and 13R/31L	<b>119.1 281.55</b>	<b>121.9 348.6</b>	GND CON	CLNC DEL	CPDLC
<b>128.725 117.7 115.4</b>	<b>128.125 269.0</b>		<b>123.9 281.55</b>	<b>348.6</b>	<b>121.9 348.6</b>	<b>135.05 348.6</b>	



NE-2, 15 AUG 2019 to 12 SEP 2019

NE-2, 15 AUG 2019 to 12 SEP 2019



## AUTHORIZATION REQUIRED