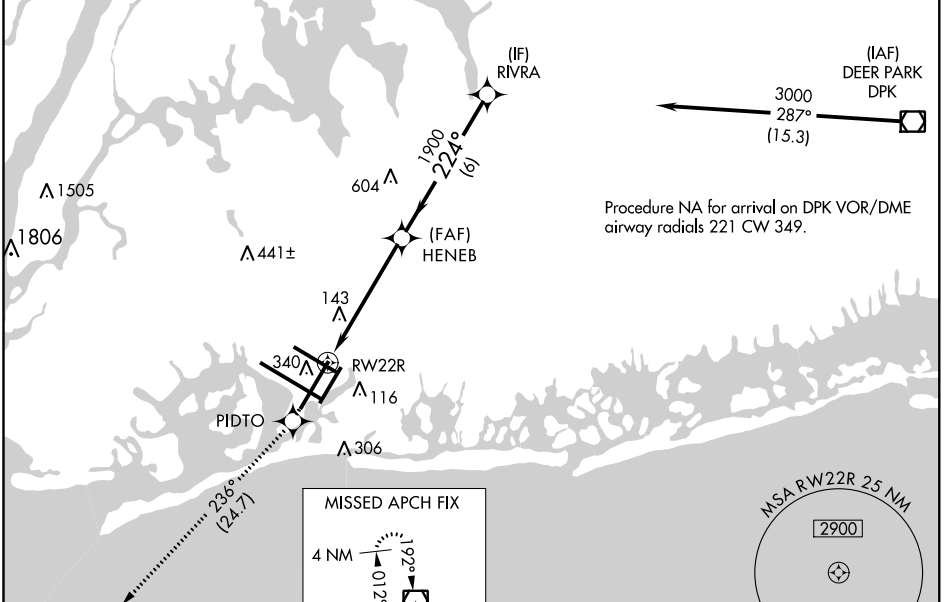


WAAS CH 40019 W22B	APP CRS 224°	Rwy Idg 7795 TDZE 13 Apt Elev 13
--	------------------------	---

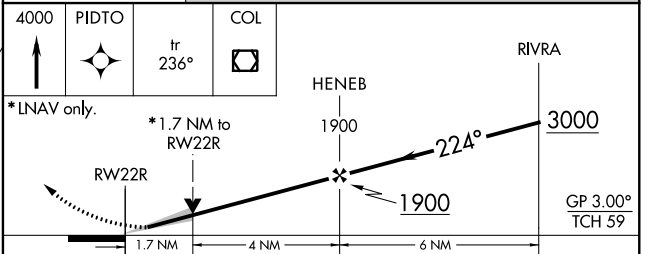
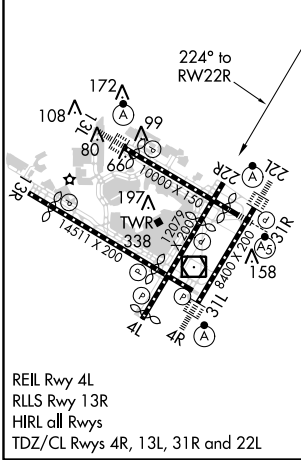
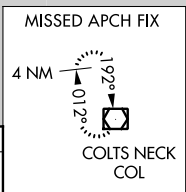
RNAV (GPS) RWY 22R

JOHN F KENNEDY INTL (JFK)

RNP APCH.		<p>▼ For uncompensated Baro-VNAV systems, LNAV/VNAV NA below -12°C (11°F) or above 54°C (130°F). Simultaneous approach authorized. Use of FD or AP providing RNAV track guidance required during simultaneous operations. LNAV procedure NA during simultaneous operations.</p>		<p>MISSED APPROACH: Climb to 4000 direct PIDTO and on track 236° to COL VOR/DME and hold.</p>	
D-ATIS (ARR/DEP) (ARR-NE) (ARR-SW) 128.725 117.7 115.4	NEW YORK APP CON 128.125 269.0	KENNEDY TOWER Rwys 4R/22L and 13L/31R 119.1 281.55 Rwys 4L/22R and 13R/31L 123.9 281.55	GND CON 348.6	CLNC DEL 135.05 348.6	CPDLC



ELEV 13	D	TDZE 13
---------	----------	---------



CATEGORY	A	B	C	D
LPV DA		269/40	256 (300-¾)	
LNAV/VNAV DA		501-1½	488 (500-1½)	
LNAV MDA	600/50	587 (600-1)	600-1¾	587 (600-1¾)
C CIRCLING	640-1	627 (700-1)	640-1¾ 627 (700-1¾)	660-2 647 (700-2)

NE-2: 15 AUG 2019 to 12 SEP 2019

NE-2: 15 AUG 2019 to 12 SEP 2019