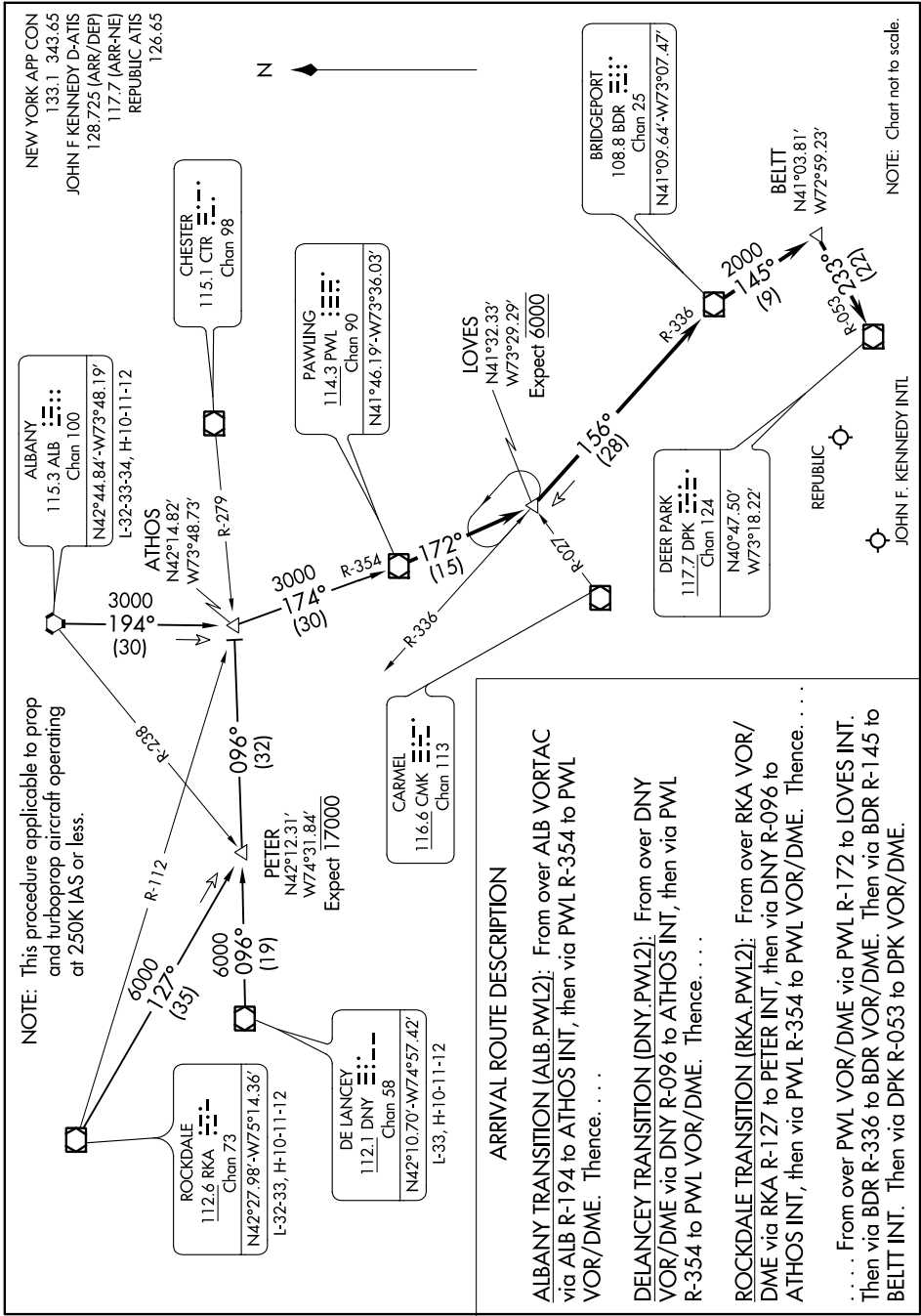


PAWLING TWO ARRIVAL

NE-2, 15 AUG 2019 to 12 SEP 2019



PAWLING TWO ARRIVAL

ARRIVAL ROUTE DESCRIPTION

ALBANY TRANSITION (ALB.PWL2): From over ALB VORTAC via ALB R-194 to ATHOS INT, then via PWL R-354 to PWL VOR/DME. Thence. . . .

DELANCEY TRANSITION (DNY.PWL2): From over DNY VOR/DME via DNY R-096 to ATHOS INT, then via PWL R-354 to PWL VOR/DME. Thence. . . .

ROCKDALE TRANSITION (RKA.PWL2): From over RKA VOR/DME via RKA R-127 to PETER INT, then via DNY R-096 to ATHOS INT, then via PWL R-354 to PWL VOR/DME. Thence. . . .

. . . . From over PWL VOR/DME via PWL R-172 to LOVES INT. Then via BDR R-336 to BDR VOR/DME. Then via BDR R-145 to BELT INT. Then via DPK R-053 to DPK VOR/DME.

NE-2, 15 AUG 2019 to 12 SEP 2019