

PARCH THREE ARRIVAL (RNAV)

NEW YORK, NEW YORK

NE-2: 15 AUG 2019 to 12 SEP 2019

NEW YORK APP CON
 125.7 269.0
 JOHN F KENNEDY INTL D-ATIS
 128.725 (ARR/DEP)
 117.7 (ARR-NE)
 115.4 (ARR-SW)

ARRIVAL ROUTE DESCRIPTION

KENNEBUNK TRANSITION (ENE:PARCH3):
 PLYMM TRANSITION (PLYMM:PARCH3):
 SANDY POINT TRANSITION (SEY:PARCH3):

From PARCH via 265° track to CCC VOR/DME. Then via 229° track to ROBER. Thence....

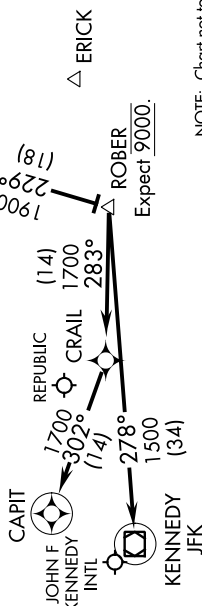
LDG Rwy 4R/L, Rwy 13R/L, Rwy 31R/L: From ROBER via 278° track to JFK VOR/DME, expect radar vectors to final approach course.

LDG Rwy 22R/L: From ROBER via 283° track to CRAIL, then via 302° track to CAPIT, expect radar vectors to final approach course.

LDG Republic (FRG) Airport: Approaching ROBER expect radar vectors to final approach course.

CALVERTON
 CCC

Expect 1200K and 250K.
 2300
 265° (32)

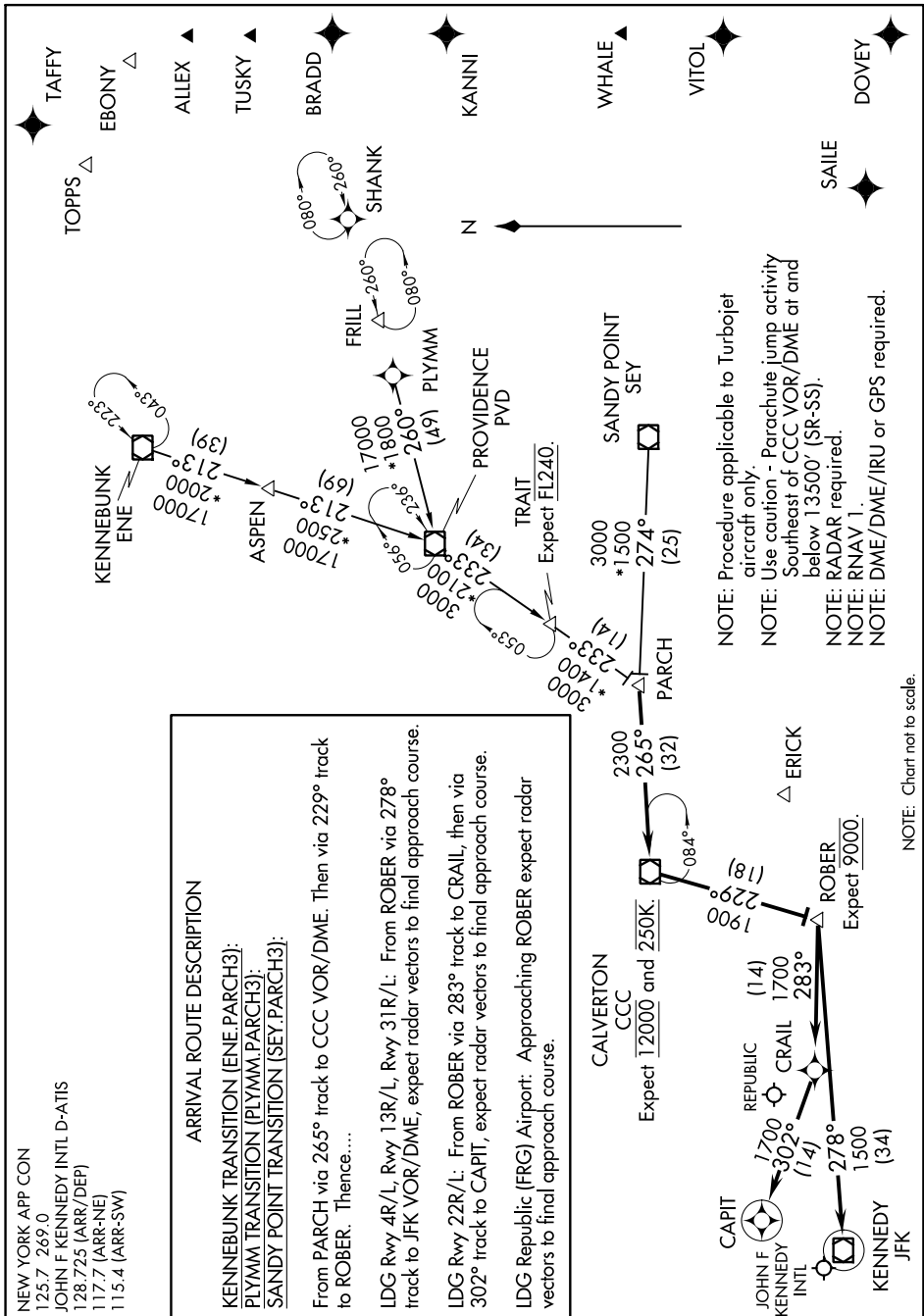


NOTE: Chart not to scale.

NE-2: 15 AUG 2019 to 12 SEP 2019

PARCH THREE ARRIVAL (RNAV)

NEW YORK, NEW YORK



NOTE: Procedure applicable to Turbojet aircraft only.
 NOTE: Use caution - Parachute jump activity Southeast of CCC VOR/DME at and below 13500' (SR-SS).
 NOTE: RADAR required.
 NOTE: RNAV 1
 NOTE: DME/DME/IRU or GPS required.