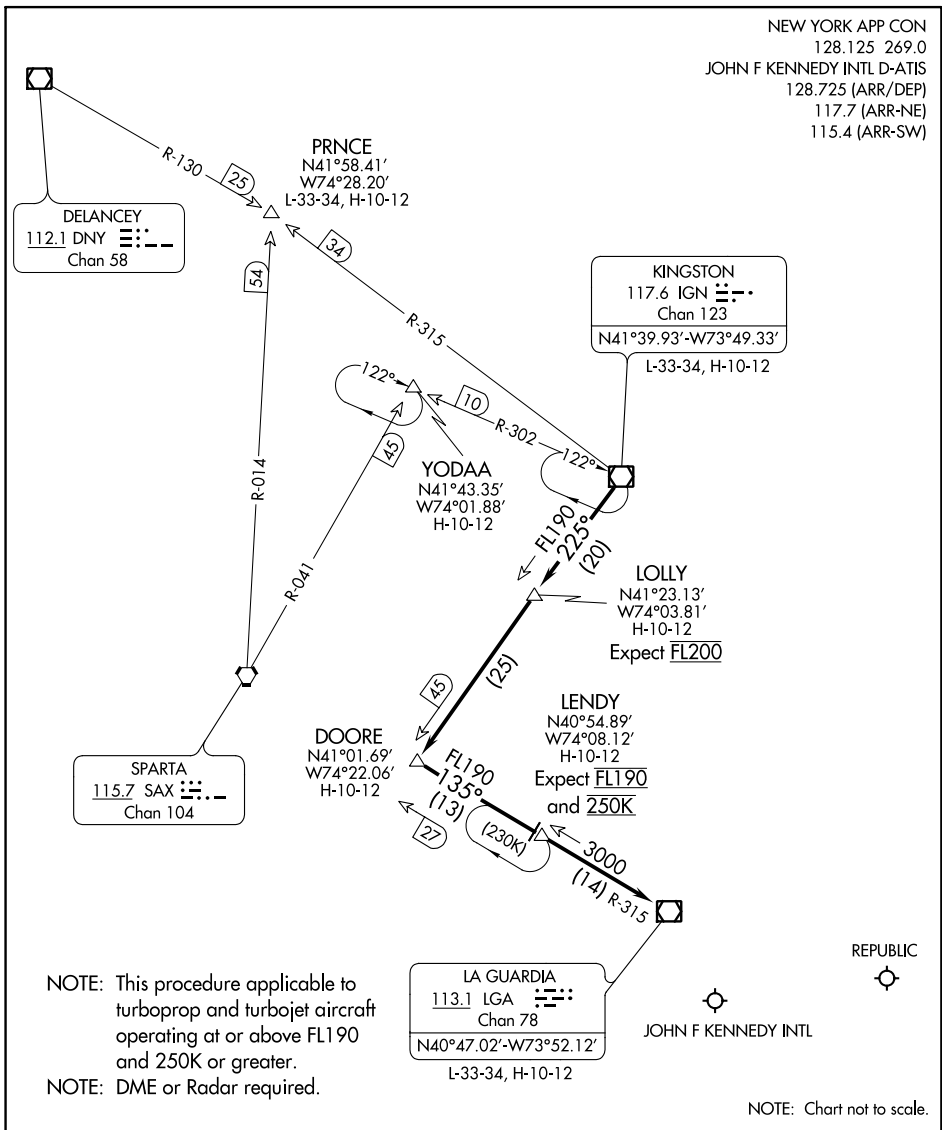


# KINGSTON ONE ARRIVAL

NEW YORK, NEW YORK

NEW YORK APP CON  
 128.125 269.0  
 JOHN F KENNEDY INTL D-ATIS  
 128.725 (ARR/DEP)  
 117.7 (ARR-NE)  
 115.4 (ARR-SW)



NE-2, 15 AUG 2019 to 12 SEP 2019

NE-2, 15 AUG 2019 to 12 SEP 2019

## ARRIVAL ROUTE DESCRIPTION

From over IGN VOR/DME on IGN R-225 to LOLLY/20 DME, then on IGN R-225 to DOORE INT, then on LGA R-315 to LENDY/14 DME, then on LGA R-315 to LGA VOR/DME. Expect radar vectors to final approach course after LGA VOR/DME.

# KINGSTON ONE ARRIVAL

NEW YORK, NEW YORK