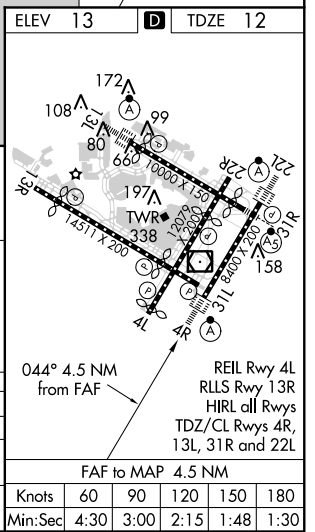
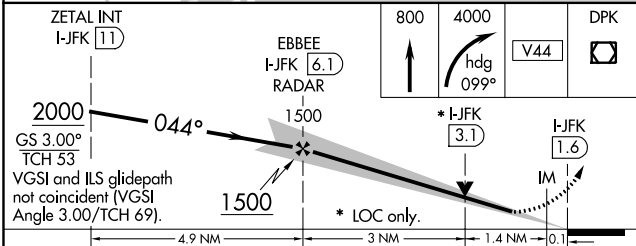
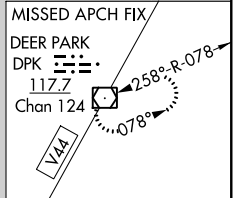
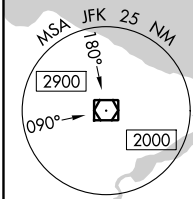
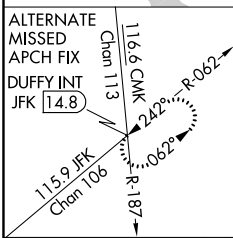
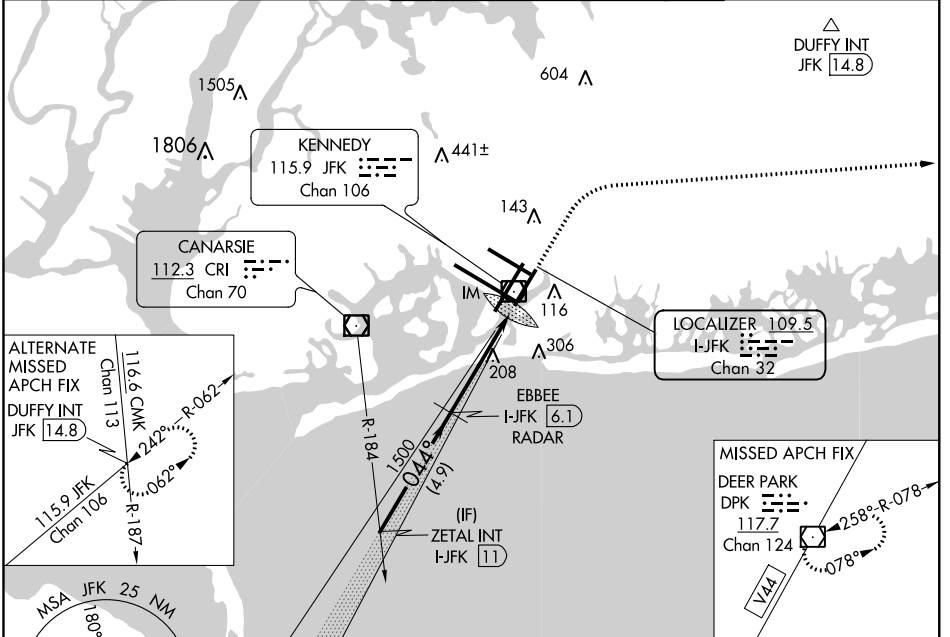


LOC/DME I-JFK	APP CRS	Rwy Idg	<b>8400</b>
<b>109.5</b>	<b>044°</b>	TDZE	<b>12</b>
Chan <b>32</b>		Apt Elev	<b>13</b>

# ILS or LOC RWY 4R

JOHN F KENNEDY INTL (JFK)

RADAR required for procedure entry.		ALSIF-2	MISSED APPROACH: Climb to 800 then climbing right turn to 4000 heading 099° and V44 to DPK VOR/DME and hold.		
Simultaneous approach authorized.		(A)			
D-ATIS	NEW YORK APP CON	KENNEDY TOWER		GND CON	CLNC DEL
(ARR/DEP)(ARR-NE) (ARR-SW)		Rwys 4R/22L and 13L/31R	<b>119.1 281.55</b>	<b>121.9</b>	<b>135.05</b>
<b>128.725 117.7 115.4</b>	<b>128.125 269.0</b>	Rwys 4L/22R and 13R/31L	<b>123.9 281.55</b>	<b>348.6</b>	<b>348.6</b>
				CPDLC	



CATEGORY	A	B	C	D
S-ILS 4R	212/18		200 (200-½)	
S-LOC 4R	540/24	528 (600-½)	540/55	528 (600-1)
CIRCLING	640-1	627 (700-1)	640-1¾ 627 (700-1¾)	660-2 647 (700-2)

NE-2, 15 AUG 2019 to 12 SEP 2019

NE-2, 15 AUG 2019 to 12 SEP 2019