

LOC/DME I-HIQ 110.9 Chan 46	APP CRS 044°	Rwy Idg 11010 TDZE 13 Apt Elev 13
---	------------------------	--

ILS or LOC RWY 4L

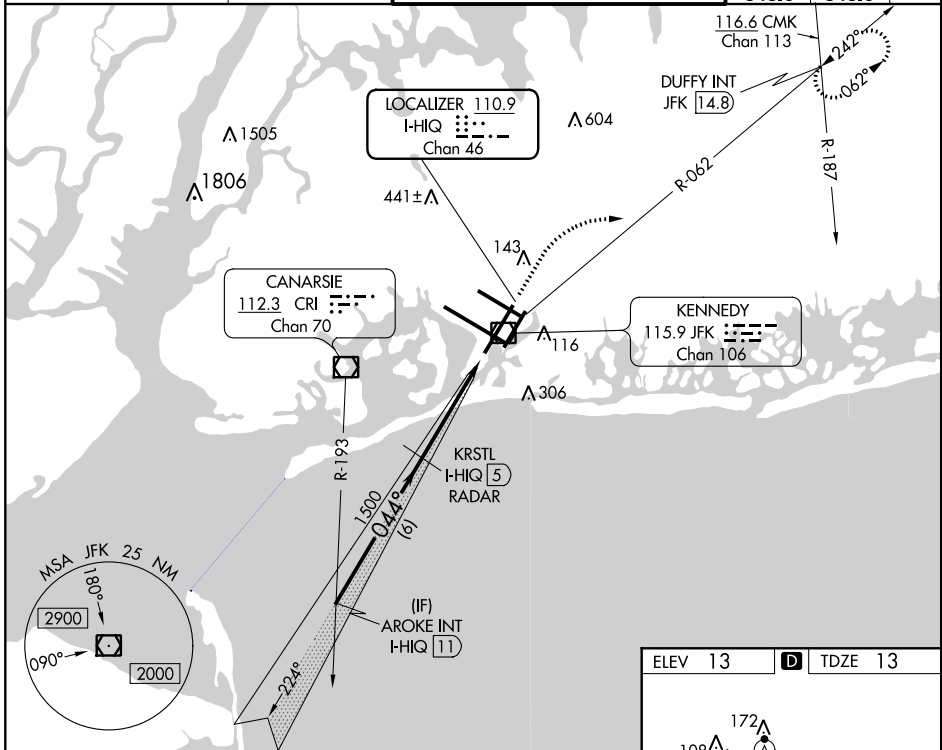
JOHN F KENNEDY INTL (JFK)

RADAR required for procedure entry. DME or RADAR required for LOC only.

MISSED APPROACH: Climb to 2000 then climbing right turn to 3000 on JFK VOR/DME R-062 to DUFFY INT/JFK 14.8 DME and hold.

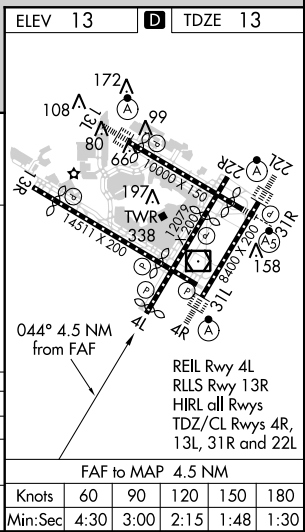
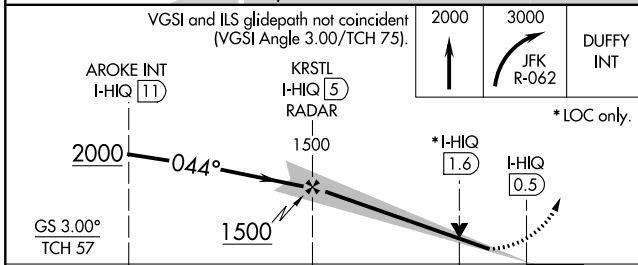
Simultaneous approach authorized.

D-ATIS (ARR/DEP) (ARR-NE) (ARR-SW) 128.725 117.7 115.4	NEW YORK APP CON 128.125 269.0	KENNEDY TOWER Rwys 4R/22L and 13L/31R 119.1 281.55 Rwys 4L/22R and 13R/31L 123.9 281.55	GND CON 121.9 135.05 348.6 348.6	CLNC DEL 135.05 348.6	CPDLC
---	--	---	--	---	-------



NE-2. 15 AUG 2019 to 12 SEP 2019

NE-2. 15 AUG 2019 to 12 SEP 2019



CATEGORY	A	B	C	D
S-ILS 4L	223/40		210 (300-¾)	
S-LOC 4L	460/55	447 (500-1)	460-1¾	447 (500-1¾)
C CIRCLING	640-1	627 (700-1)	640-1¾ 627 (700-1¾)	660-2 647 (700-2)