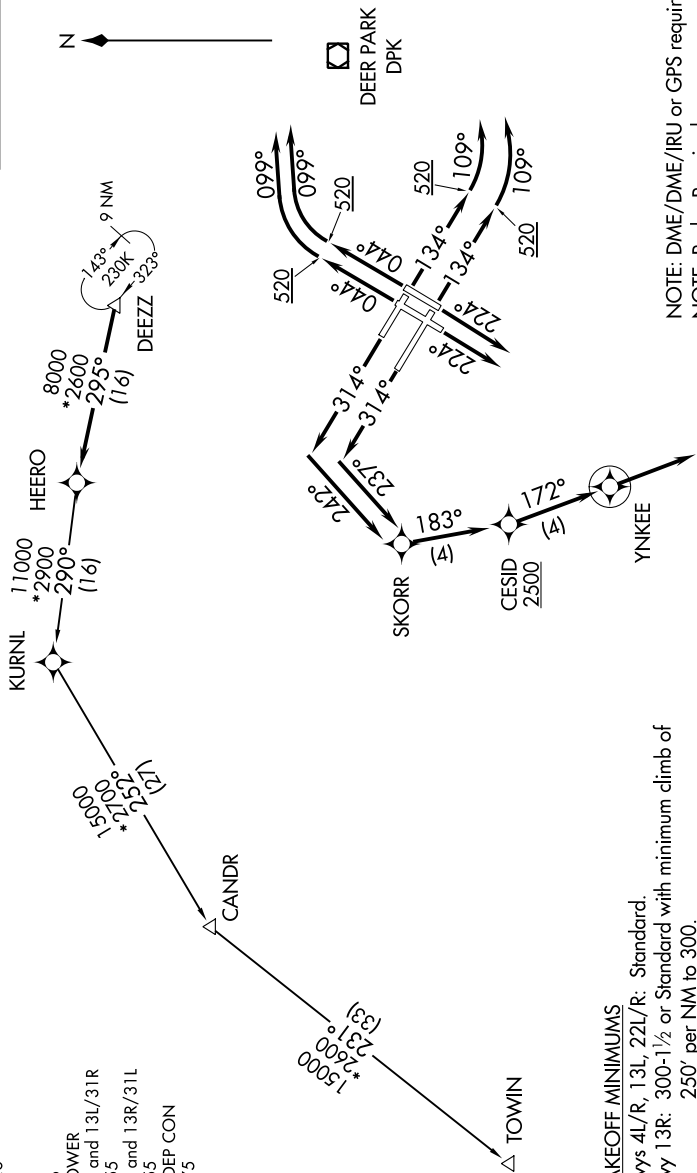


DEZZ FIVE DEPARTURE (RNAV)

NE-2, 15 AUG 2019 to 12 SEP 2019

D-ATIS 128.725
 CLNC DEL 135.05 348.6
 CPDIC
 GND CON 121.9 348.6
 KENNEDY TOWER
 Rwy 4R/22L and 13L/31R 119.1 281.55
 Rwy 4L/22R and 13R/31L 123.9 281.55
 NEW YORK DEP CON 135.9 353.75

**TOP ALTITUDE:
5000**



TAKEOFF MINIMUMS
 Rwy 4L/R, 13L, 22L/R: Standard.
 Rwy 13R: 300-1/2 or Standard with minimum climb of 250' per NM to 300.
 Rwy 31L/R: Standard with minimum climb of 500' per NM to 1400.

NOTE: DME/DME/IRU or GPS required.
 NOTE: Radar Required.
 NOTE: RNAV 1.
 NOTE: TOWIN transition ATC assigned only.

(NARRATIVE ON FOLLOWING PAGE)

NOTE: Chart not to scale.

NE-2, 15 AUG 2019 to 12 SEP 2019