

# CAMRN FOUR ARRIVAL

NEW YORK, NEW YORK

NEW YORK APP CON  
 128.125 269.0  
 JOHN F KENNEDY INTL D-ATIS  
 128.725 (ARR/DEP)  
 117.7 (ARR-NE)  
 115.4 (ARR-SW)  
 REPUBLIC ATIS  
 126.65

DEER PARK  
 117.7 DPK  
 Chan 124

JOHN F KENNEDY INTL

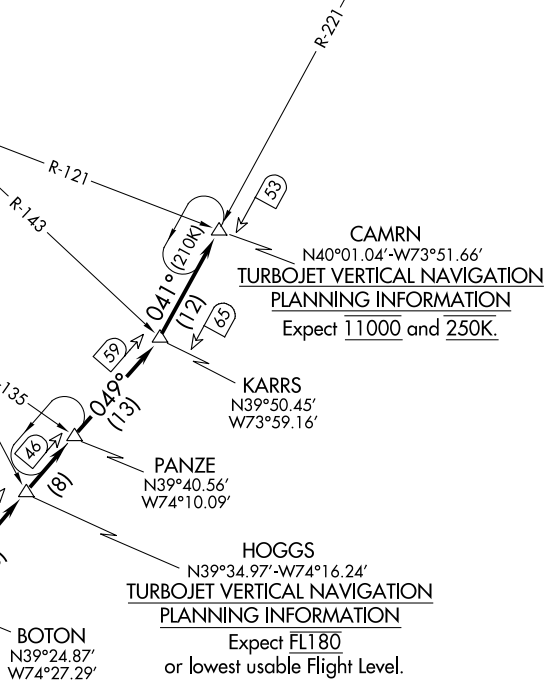
REPUBLIC

ROBBINSVILLE  
 113.8 RBV  
 Chan 85

COYLE  
 113.4 CYN  
 Chan 81

ATLANTIC CITY  
 108.6 ACY  
 Chan 23

SEA ISLE  
 114.8 SIE  
 Chan 95  
 N39°05.73'  
 W74°48.02'  
 L-34, H-10-12



CAMRN  
 N40°01.04'-W73°51.66'  
TURBOJET VERTICAL NAVIGATION  
PLANNING INFORMATION  
 Expect 11000 and 250K.

KARRS  
 N39°50.45'  
 W73°59.16'

PANZE  
 N39°40.56'  
 W74°10.09'

HOGGS  
 N39°34.97'-W74°16.24'  
TURBOJET VERTICAL NAVIGATION  
PLANNING INFORMATION  
 Expect FL180  
 or lowest usable Flight Level.

NOTE: STAR applicable to Turbojet aircraft only.

NOTE: Chart not to scale.

## ARRIVAL ROUTE DESCRIPTION

From over SIE VORTAC via SIE R-049 and DPK R-221 to CAMRN INT. Expect radar vectors to final approach fix in use.

NE-2, 15 AUG 2019 to 12 SEP 2019

NE-2, 15 AUG 2019 to 12 SEP 2019

# CAMRN FOUR ARRIVAL

NEW YORK, NEW YORK