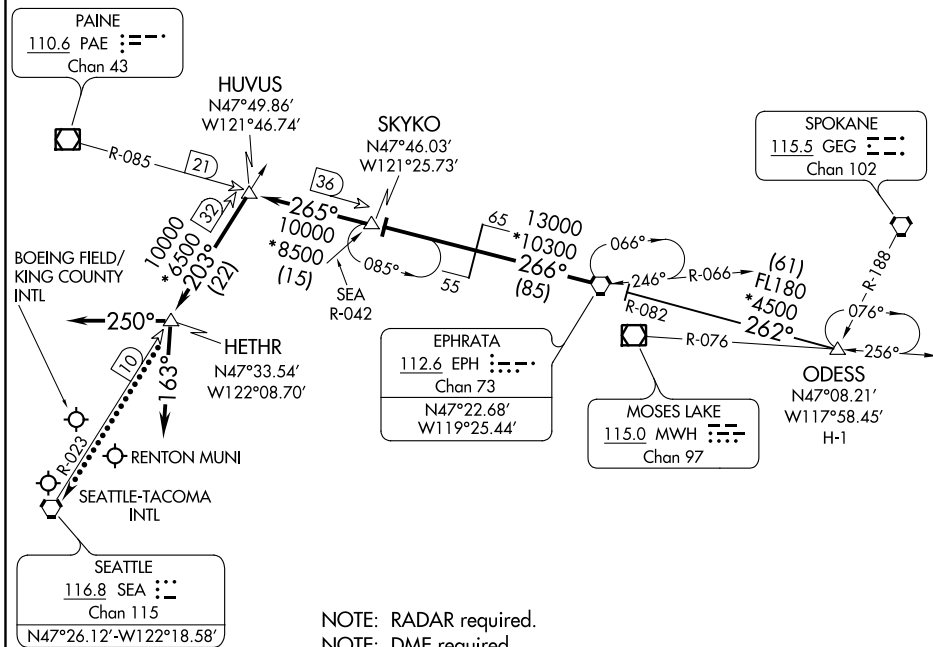


SEATTLE APP CON
 123.9 338.2
 SEATTLE-TACOMA INTL D-ATIS
 118.0
 BOEING FIELD ATIS
 127.75
 RENTON MUNI ATIS
 126.95



NOTE: RADAR required.
 NOTE: DME required.
 NOTE: Procedure for non-turbojet aircraft only.

NOTE: Chart not to scale.

ARRIVAL ROUTE DESCRIPTION

ODESS TRANSITION (ODESS.EPH8): From over ODESS INT on EPH R-082 to EPH VORTAC. Thence

. . . . from EPH VORTAC on EPH R-266 and PAE R-085 to SKYKO INT, then on PAE R-085 to HUVUS INT, then on SEA R-023 to HETHR INT, thence

LANDING NORTH: Heading 163°. Expect RADAR vectors to final approach course.

LANDING SOUTH: Heading 250°. Expect RADAR vectors to final approach course.

LOST COMMUNICATIONS: From over HETHR proceed direct SEA VORTAC.

NW-1, 15 AUG 2019 to 12 SEP 2019

NW-1, 15 AUG 2019 to 12 SEP 2019