

SUMMA ONE DEPARTURE

SEATTLE-TACOMA INTL (SEA)
SEATTLE, WASHINGTON

AL-582 (FAA)

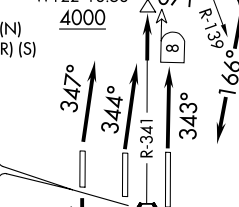
D-ATIS
118.0
CPDLC
SEATTLE DEP CON
119.2 284.7 (Rwys 34R/C/L) (N)
120.4 269.125 (Rwys 16L/C/R) (S)

SEATTLE
116.8 SEA
Chan 115
N47°26.12' W122°18.58'

PAINE
110.6 PAE
Chan 43

**TOP ALTITUDE:
ASSIGNED BY ATC**

NEZUG
N47°34.12'
W122°18.58'
4000



TAKEOFF MINIMUMS
Rwys 16L/C/R: Standard.
Rwys 34L/C/R: Standard with minimum climb
of 580' per NM to 4000.

NEVJO
N47°15.13'
W122°18.58'

OLYMPIA
113.4 OLM
Chan 81

SUMMA
N46°37.07'
W121°59.30'

BAKER CITY
115.3 BKE
Chan 100
N44°50.44' W117°48.47'
L-13, H-1

LAKEVIEW
112.0 LKV
Chan 57
N42°29.57' W120°30.43'
L-11, H-3

NOTE: RADAR and DME required.
NOTE: Chart not to scale.

DEPARTURE ROUTE DESCRIPTION

TAKEOFF RUNWAY 34L: Climb heading 347° and SEA R-341, thence. . . .
TAKEOFF RUNWAY 34C: Climb heading 344° and SEA R-341, thence. . . .
TAKEOFF RUNWAY 34R: Climb heading 343° and SEA R-341, thence. . . .
. . . . to cross NEZUG at or above 4000, then right turn heading 071° to cross the
PAE R-139, then right turn heading 166° to intercept SEA R-146 to SUMMA INT,
then on assigned transition.

TAKEOFF RUNWAYS 16L/C: Climb heading 164° and SEA R-161, thence. . . .
TAKEOFF RUNWAY 16R: Climb heading 162° and SEA R-161, thence. . . .

. . . . to NEVJO, then left turn heading 131° to intercept the SEA R-146 to SUMMA INT,
then on assigned transition.

BAKER CITY TRANSITION (SUMMA1.BKE): From over SUMMA INT on OLM R-100
and BKE R-283 to BKE VOR/DME.

LAKEVIEW TRANSITION (SUMMA1.LKV): From over SUMMA INT on SEA R-146
and LKV R-327 to LKV VORTAC.

SUMMA ONE DEPARTURE

SEATTLE, WASHINGTON
SEATTLE-TACOMA INTL (SEA)

NW-1, 15 AUG 2019 to 12 SEP 2019

NW-1, 15 AUG 2019 to 12 SEP 2019