

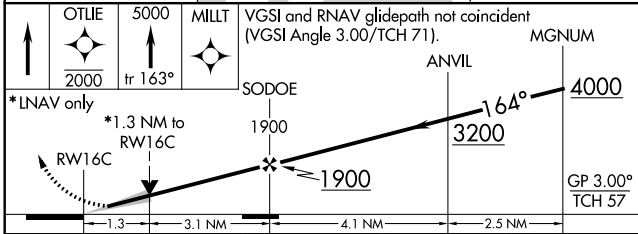
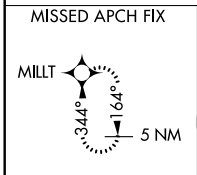
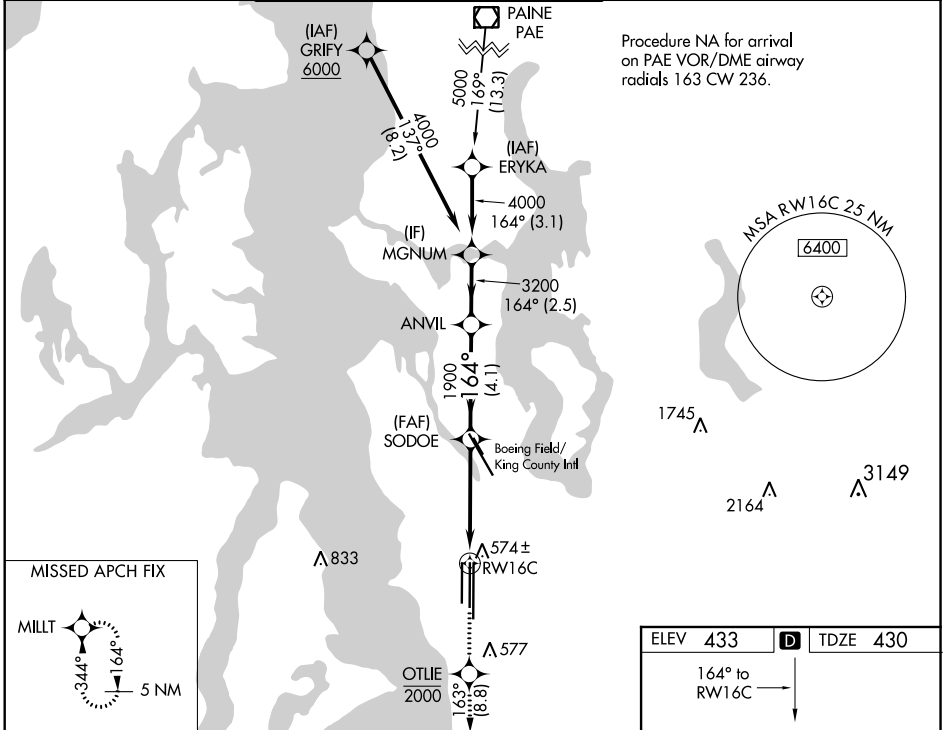
WAAS CH <b>61010</b> <b>W16B</b>	APP CRS <b>164°</b>	Rwy Idg <b>9426</b> TDZE <b>430</b> Apt Elev <b>433</b>
--	------------------------	---

# RNAV (GPS) Y RWY 16C

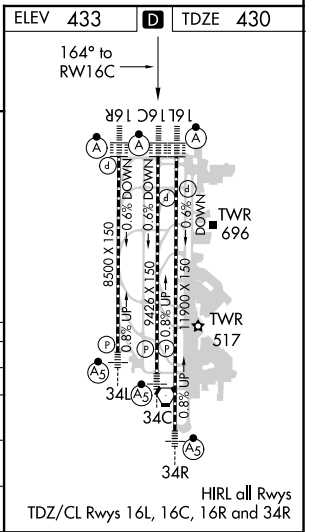
SEATTLE-TACOMA INTL (SEA)

<p>▼ For uncompensated Baro-VNAV systems, LNAV/VNAV NA below -6°C (22°F) or above 54°C (130°F). DME/DME RNP-0.3 NA. For inop ALS, increase LNAV Cats C/D visibility to 1% . See additional requirements on adjacent information page.</p>	<p>ALSF-2</p>	<p>MISSED APPROACH: Climb direct OTLIE to cross OTLIE at or below 2000, then climb to 5000 on track 163° to MILLT and hold, continue climb-in-hold to 5000.</p>

D-ATIS <b>118.0</b>	SEATTLE APP CON <b>133.65 273.45</b>	SEATTLE TOWER <b>119.9 239.3</b> (Rwys 16L, 16C, 34C, 34R) <b>120.95 239.3</b> (Rwys 16R, 34L)	GND CON <b>121.7</b>	CLNC DEL <b>128.0</b>	CPDLC
------------------------	---	--	-------------------------	--------------------------	-------



CATEGORY	A	B	C	D
LPV DA		630/18	200 (200-½)	
LNAV/VNAV DA		840/44	410 (500-¾)	
LNAV MDA	920/24	490 (500-½)	920/50	490 (500-1)
CIRCLING	1000-1	567 (600-1)	1000-1½ 567 (600-1½)	1000-2 567 (600-2)



NW-1, 15 AUG 2019 to 12 SEP 2019

NW-1, 15 AUG 2019 to 12 SEP 2019