

RNAV (RNP) Z RWY 34R

SEATTLE-TACOMA INTL (SEA)

APP CRS	Rwy Idg	11900
344°	TDZE	372
	Apt Elev	432

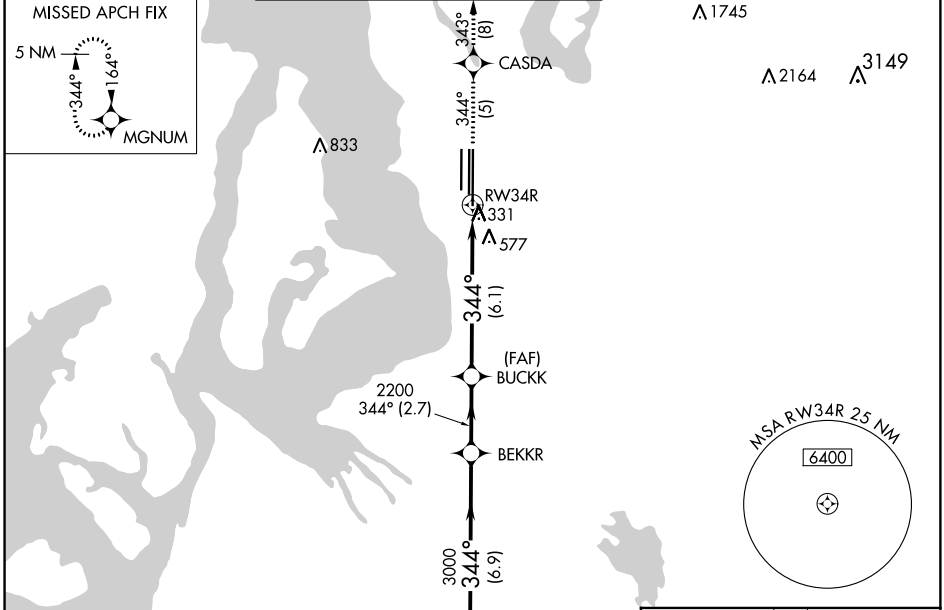
RNP AR APCH.

Simultaneous approach authorized. For uncompensated Baro-VNAV systems, procedure NA below -6°C or above 54°C. Use of FD or AP required during simultaneous operations. For inop ALS, increase RNP 0.28 all Cats visibility to 1½ SM. Inop table does not apply to RNP 0.30.

MALSRL

MISSED APPROACH: Climb to 5000 on track 344° to CASDA and on track 343° to MGNUM and hold, continue climb-in-hold to 5000.

D-ATIS	SEATTLE APP CON	SEATTLE TOWER	GND CON	CLNC DEL	CPDLC
118.0	133.65 273.45	119.9 239.3 (Rwys 16L, 16C, 34C, 34R) 120.95 239.3 (Rwys 16R, 34L)	121.7	128.0	



VGSI and RNAV glidepath not coincident (VGSI Angle 2.75/TCH 81).

NEEL

5000

344°

BEKKR

3000

BUCKK

2200

RW34R

GP 2.75° TCH 60

6.9 NM

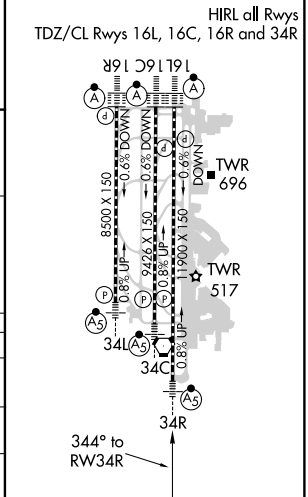
2.7 NM

6.1 NM

5000 CASDA tr 344°

tr 343° MGNUM

ELEV 432	TDZE 372
----------	----------



CATEGORY	A	B	C	D
RNP 0.28 DA		867/50	495 (500-1)	
RNP 0.30 DA		880-1½	508 (500-1½)	

AUTHORIZATION REQUIRED

NW-1, 15 AUG 2019 to 12 SEP 2019

NW-1, 15 AUG 2019 to 12 SEP 2019