

APP CRS	Rwy Idg	<b>8500</b>
<b>164°</b>	TDZE	<b>415</b>
	Apt Elev	<b>433</b>

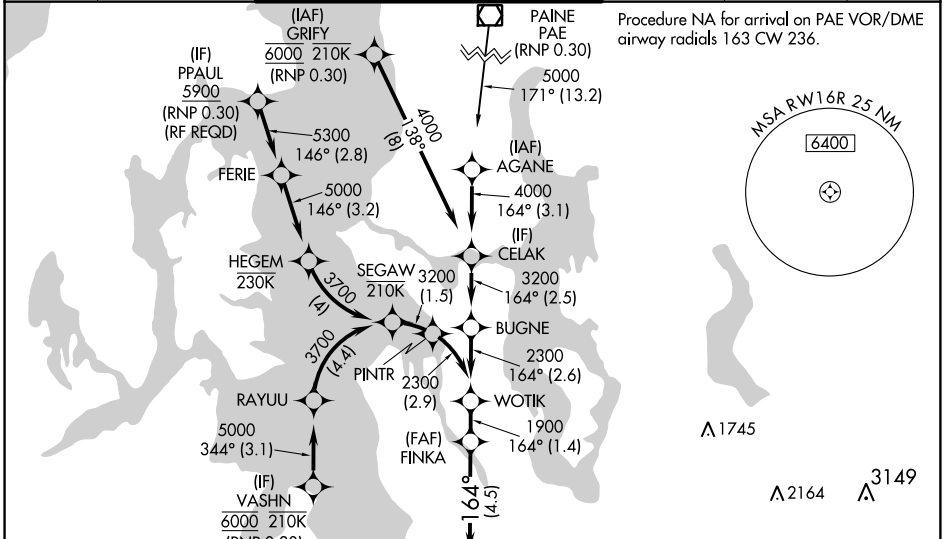
# RNAV (RNP) Z RWY 16R

SEATTLE-TACOMA INTL (SEA)

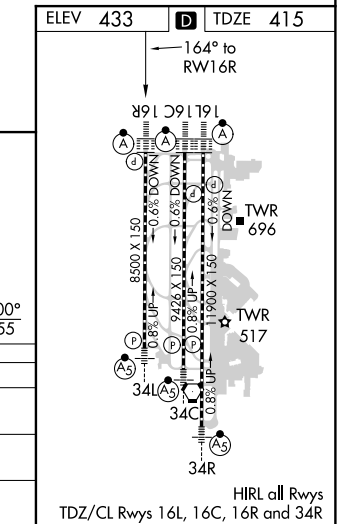
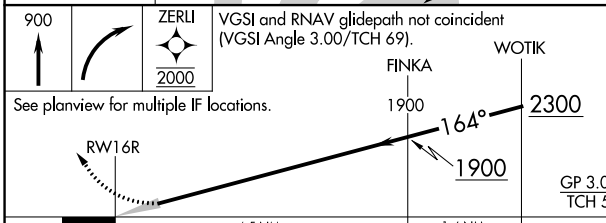
**▼** For uncompensated Baro-VNAV systems, procedure NA below -6°C (22°F) or above 54°C (130°F). Simultaneous approach authorized with Rwy 16L, except for arrivals at PPAUL and VASHN. GPS required. Use of FD or AP providing RNAV track guidance required during simultaneous operations. For inop ALS, increase RNP 0.15 all Cats visibility to RVR 5800, increase RNP 0.30 all Cats visibility to 1½ SM.

**ALSF-2**  
  
**MISSED APPROACH:** Climb to 900 then climbing right direct ZERLI to cross ZERLI at 2000 and hold, when authorized by ATC, continue climb in hold to 5000.

D-ATIS	SEATTLE APP CON	SEATTLE TOWER	GND CON	CLNC DEL	CPDLC
<b>118.0</b>	<b>133.65 273.45</b>	<b>119.9 239.3</b> (Rwys 16L, 16C, 34C, 34R) <b>120.95 239.3</b> (Rwys 16R, 34L)	<b>121.7</b>	<b>128.0</b>	



**RADAR REQUIRED**



CATEGORY	A	B	C	D
RNP 0.15 DA		770/34	355 (400-5%)	
RNP 0.30 DA		854/50	439 (500-1)	

## AUTHORIZATION REQUIRED

NW-1, 15 AUG 2019 to 12 SEP 2019

NW-1, 15 AUG 2019 to 12 SEP 2019