

# RNAV (RNP) Z RWY 16C

SEATTLE-TACOMA INTL (SEA)

APP CRS	Rwy Idg	<b>9426</b>
<b>164°</b>	TDZE	<b>430</b>
	Apt Elev	<b>433</b>

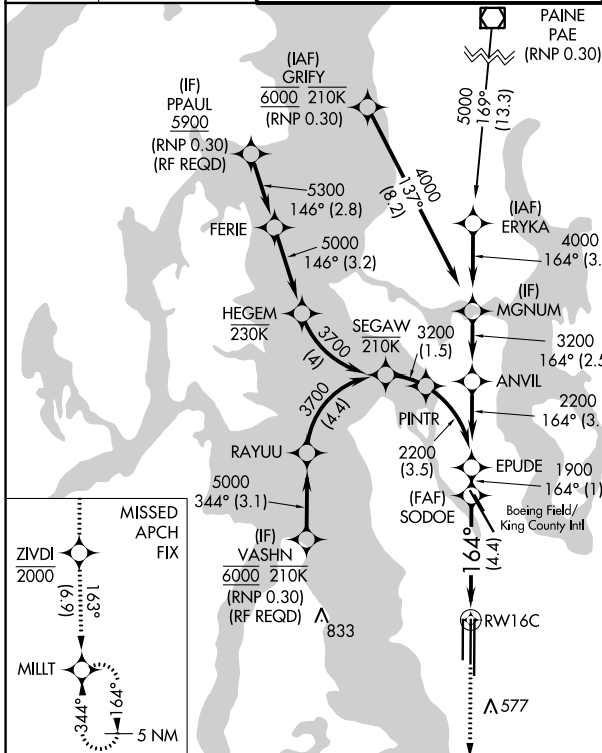
**▽** For uncompensated Baro-VNAV systems, procedure NA below -6°C (22°F) or above 54°C (130°F). GPS required. See additional requirements on adjacent information page. For inop ALS, increase RNP 0.12 all Cats visibility to RVR 5200, and increase RNP 0.30 all Cats visibility to 1 3/8 SM.

ALSF-2

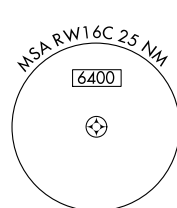


**MISSED APPROACH:** Climb direct ZIVDI to cross ZIVDI at or below 2000, then climb to 5000 on track 163° to MILLT and hold, continue climb-in-hold to 5000.

D-ATIS	SEATTLE APP CON	SEATTLE TOWER	GND CON	CLNC DEL	CPDLC
<b>118.0</b>	<b>133.65 273.45</b>	<b>119.9 239.3</b> (Rwys 16L, 16C, 34C, 34R) <b>120.95 239.3</b> (Rwys 16R, 34L)	<b>121.7</b>	<b>128.0</b>	

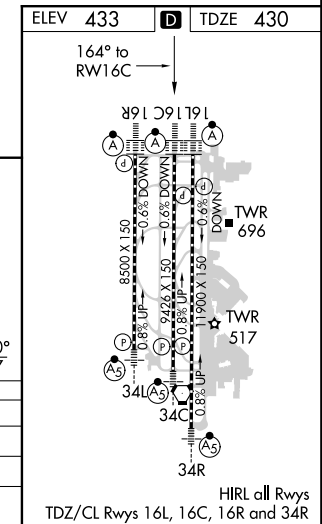
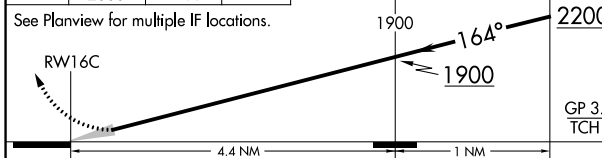
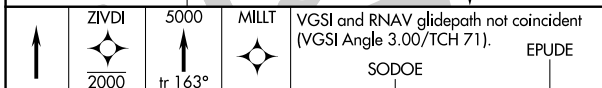
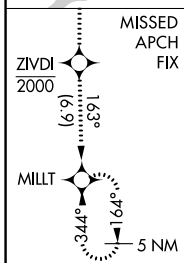


Procedure NA for arrival on PAE VOR/DME airway radials 163 CW 236.



**RADAR REQUIRED**

- △ 1745
- △ 2164
- △ 3149



CATEGORY	A	B	C	D
RNP 0.12 DA		758/29	328 (400-5%)	
RNP 0.30 DA		834/43	404 (500-7%)	

**AUTHORIZATION REQUIRED**

NW-1, 15 AUG 2019 to 12 SEP 2019

NW-1, 15 AUG 2019 to 12 SEP 2019