

| | | |
|--|------------------------|---|
| LOC/DME I-SNQ 110.3 Chan 40 | APP CRS 164° | Rwy Idg TDZE 432 Apt Elev 432 |
|--|------------------------|---|

ILS RWY 16L (SA CAT I)

SEATTLE-TACOMA INTL (SEA)

DME or RADAR required. From GRIFY:RNAV 1-GPS required.

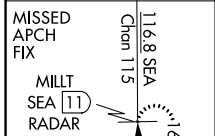
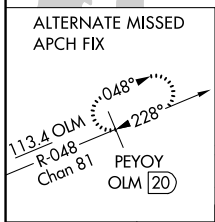
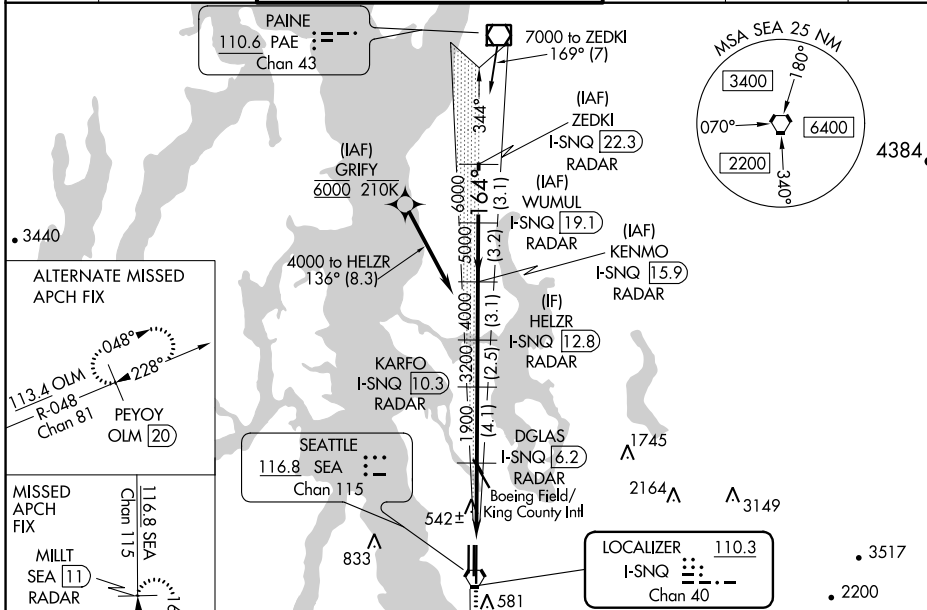
Simultaneous approach authorized with Rwy 16R.
Requires specific OPSPEC, MSPEC, or LOA approval
and use of HUD to DH.

ALSIF-2

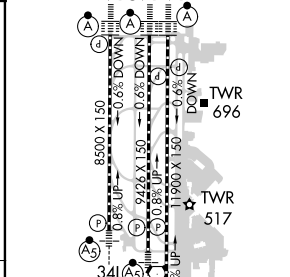
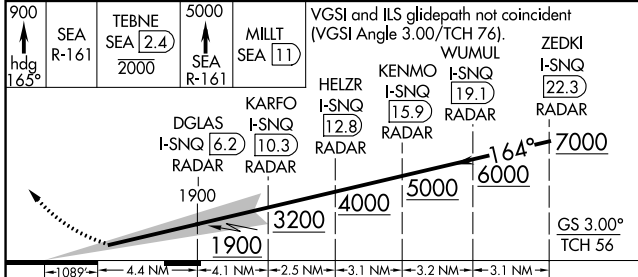


MISSED APPROACH: Climb to 900 on heading 165° then on SEA VORTAC R-161 to cross TEBNE/SEA 2.4 DME/RADAR at or below 2000 then climb to 5000 on SEA VORTAC R-161 to MILLT/SEA 11 DME/RADAR and hold, continue climb-in-hold to 5000.

| | | | | | |
|------------------------|---|--|-------------------------|--------------------------|-------|
| D-ATIS 118.0 | SEATTLE APP CON 133.65 273.45 | SEATTLE TOWER 119.9 239.3 (Rwys 16L, 16C, 34C, 34R) 120.95 239.3 (Rwys 16R, 34L) | GND CON 121.7 | CLNC DEL 128.0 | CPDLC |
|------------------------|---|--|-------------------------|--------------------------|-------|



| | |
|----------|-------------------|
| ELEV 432 | D TDZE 432 |
|----------|-------------------|



| | | | | |
|-----------|----------------------|---|---|---|
| CATEGORY | A | B | C | D |
| S-ILS 16L | RA 248/14 150 DA 582 | | | |

SA CATEGORY I ILS - SPECIAL AIRCREW & AIRCRAFT CERTIFICATION REQUIRED

HIRL all Rwys
TDZ/CL Rwys 16L, 16C, 16R and 34R

NW-1, 15 AUG 2019 to 12 SEP 2019

NW-1, 15 AUG 2019 to 12 SEP 2019