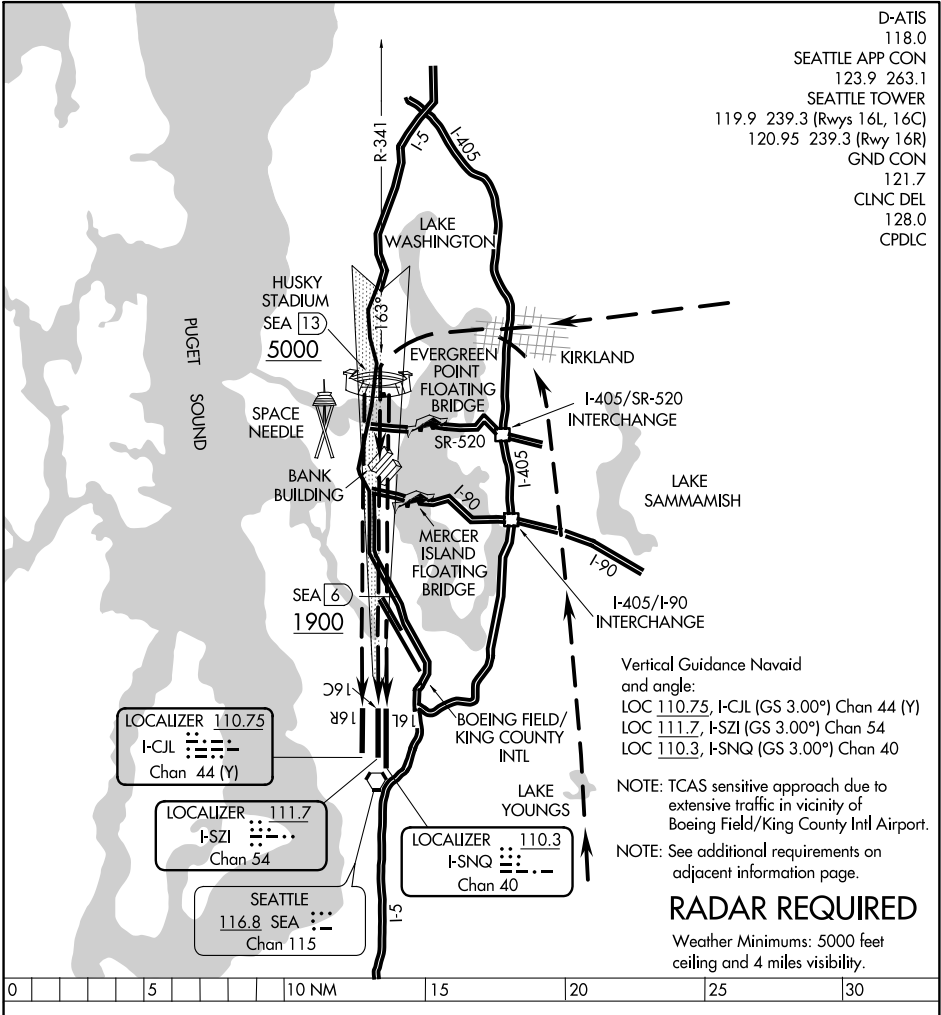


D-ATIS 118.0
 SEATTLE APP CON 123.9 263.1
 SEATTLE TOWER 119.9 239.3 (Rwys 16L, 16C)
 120.95 239.3 (Rwy 16R)
 GND CON 121.7
 CLNC DEL 128.0
 CPDLC



NW-1, 15 AUG 2019 to 12 SEP 2019

NW-1, 15 AUG 2019 to 12 SEP 2019

Vertical Guidance Navaid and angle:
 LOC 110.75, I-CJL (GS 3.00°) Chan 44 (Y)
 LOC 111.7, I-SZI (GS 3.00°) Chan 54
 LOC 110.3, I-SNQ (GS 3.00°) Chan 40

NOTE: TCAS sensitive approach due to extensive traffic in vicinity of Boeing Field/King County Intl Airport.

NOTE: See additional requirements on adjacent information page.

RADAR REQUIRED
 Weather Minimums: 5000 feet ceiling and 4 miles visibility.

HUSKY VISUAL APPROACH RWY 16R/C/L

When the ceiling is at least 5000' and visibility is at least 4 miles, aircraft may be vectored over Kirkland or Lake Youngs for a Husky Visual Runway 16R/C/L Approach. When cleared for a Husky Visual Approach; proceed inbound visually over Husky Stadium (via route depicted); intercept the Runway 16R/C/L localizer/SEA R-341 at 13 DME and complete a straight in visual approach to the airport.