

LOC/DME I-MPV 108.7 Chan 24	APP CRS 168°	Rwy Idg TDZE Apt Elev	5002 1135 1166
--	------------------------	-----------------------------	---

ILS or LOC RWY 17
EDWARD F KNAPP STATE (MPV)

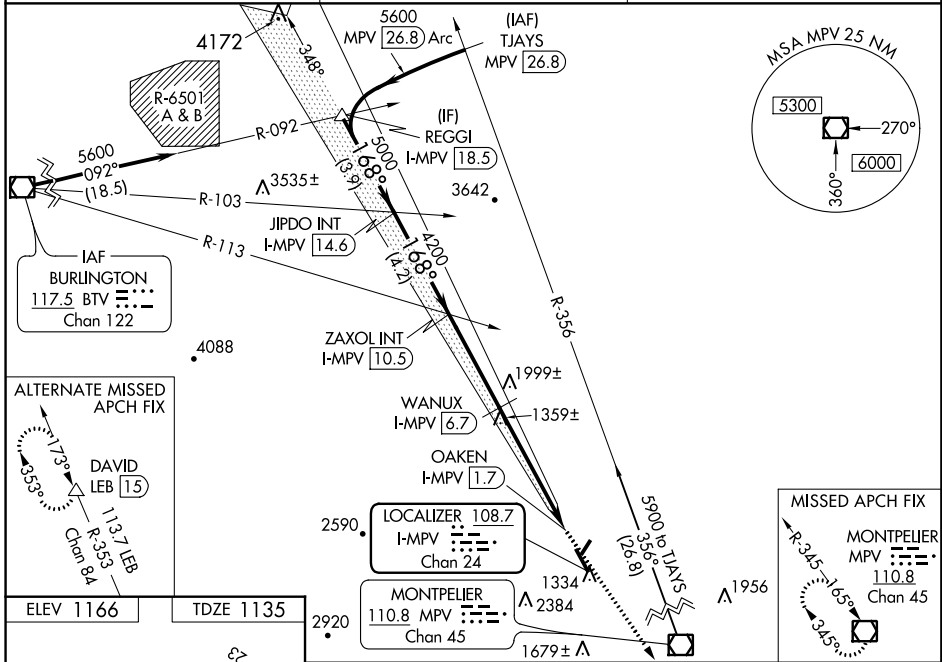
NA Inoperative table does not apply to S-LOC 17 Cats A and B. When local altimeter setting not received, procedure NA. Helicopter visibility reduction below 3/4 SM NA. Night landing: Rwy 5, 35 NA. For inoperative MALSRL, increase S-ILS 17 all Cats visibility to 1 1/2 mile and WANUX fix minimums S-LOC 17 Cats A/B visibility to 1 mile and Cats C/D visibility to 1 1/2 mile.

MALSRL

MISSED APPROACH: Climb to 5200 direct MPV VOR/DME and hold, continue climb-in-hold to 5200.

-20°C

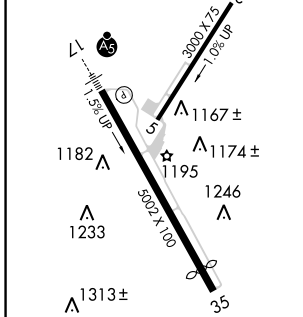
ASOS 132.675	BOSTON CENTER 135.7 282.2	UNICOM 122.8 (CTAF)
-------------------------------	--	--------------------------------------



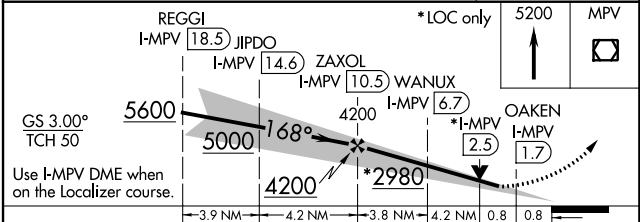
NE-1, 15 AUG 2019 to 12 SEP 2019

NE-1, 15 AUG 2019 to 12 SEP 2019

ELEV 1166	TDZE 1135
-----------	-----------



FAF to MAP 8.8 NM					
Knots	60	90	120	150	180
Min:Sec	8:48	5:52	4:24	3:31	2:56



CATEGORY	A	B	C	D
S-ILS 17	1486-3/4 351 (400-3/4)			
S-LOC 17	2980-1 1/4 1845 (1900-1 1/4)	2980-1 1/2 1845 (1900-1 1/2)	2980-3	1845 (1900-3)
CIRCLING	2980-1 1/4 1814 (1900-1 1/4)	2980-1 1/2 1814 (1900-1 1/2)	2980-3	1814 (1900-3)
WANUX FIX MINIMUMS				
S-LOC 17	1660-3/4	525 (500-3/4)	1660-1 1/4	525 (500-1 1/4)
CIRCLING	1980-1 1/4	814 (900-1 1/4)	2640-3 1474 (1500-3)	2920-3 1754 (1800-3)