

APP CRS Rwy Idg **6300**
 187° TDZE **6451**
 Apt Elev **6451**

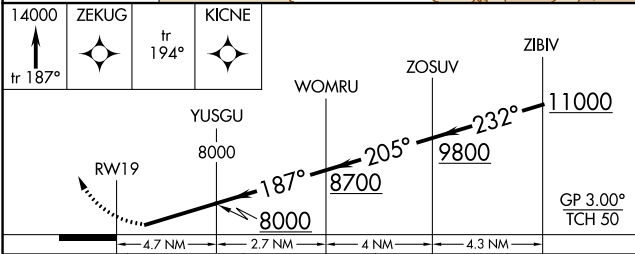
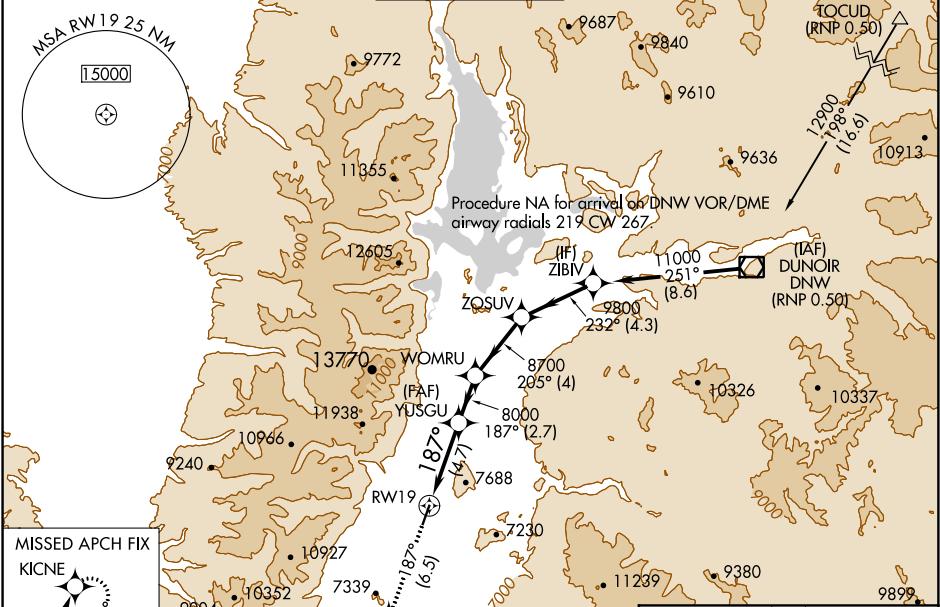
RNAV (RNP) Y RWY 19

JACKSON HOLE (JAC)

RNP AR APCH.
 For uncompensated Baro-VNAV systems, procedure NA below -27°C or above 54°C. For inop ALS, increase RNP 0.30 all Cats visibility to 1 3/8 SM. For inop ALS, increase RNP 0.11* all Cats visibility to RVR 4500.

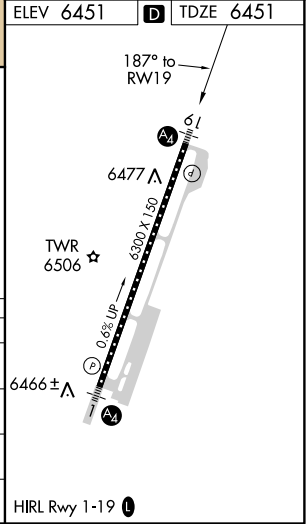
MALS
 MISSED APPROACH: Climb to 14000 on track 187° to ZEKUG and on track 194° to KICNE and hold, continue climb-in-hold to 14000.
 * Missed approach requires minimum climb of 250 feet per NM to 8200.
 # Missed approach requires minimum climb of 330 feet per NM to 8200.

ATIS* 120.625	SALT LAKE CENTER 133.25 285.6	JACKSON TOWER* 118.075 (CTAF)	GND CON 124.55	UNICOM 122.95
-------------------------	---	---	--------------------------	-------------------------



CATEGORY	A	B	C	D
RNP 0.11 DA*		6750/40	299 (300-3/4)	
RNP 0.30 DA#		6826/40	375 (400-3/4)	
RNP 0.30 DA		6911/55	460 (500-1)	

AUTHORIZATION REQUIRED



HIRL Rwy 1-19

NW-1, 15 AUG 2019 to 12 SEP 2019

NW-1, 15 AUG 2019 to 12 SEP 2019