

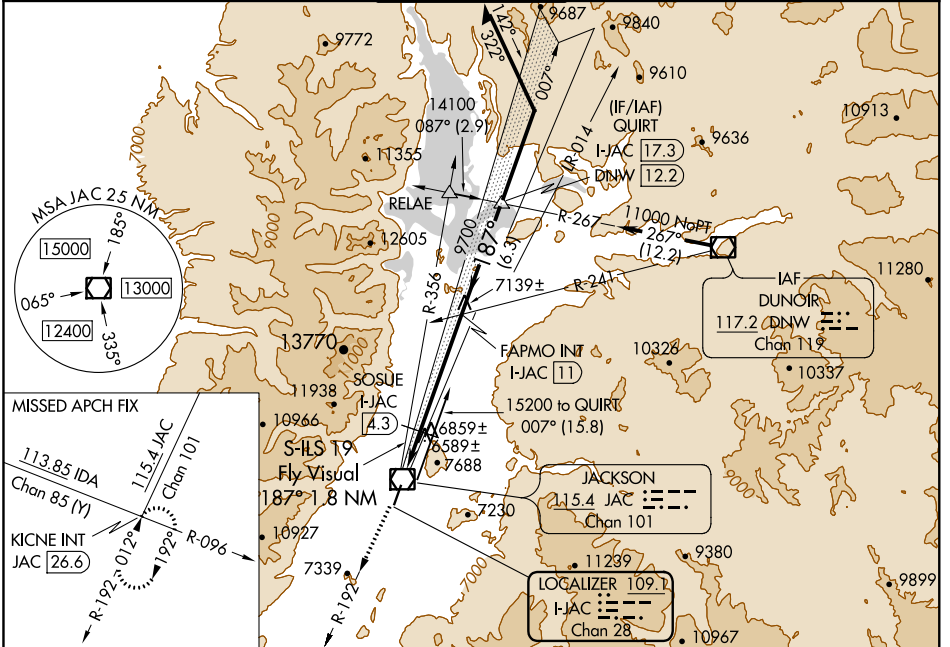
LOC/DME I-JAC 109.1 Chan 28	APP CRS 187°	Rwy Idg TDZE Apt Elev	6300 6451 6451
--	------------------------	-----------------------------	---

ILS Y or LOC RWY 19

JACKSON HOLE (JAC)

<p>NA Inoperative table does not apply. 26°C Circling NA E of Rwy 1-19.</p>	<p>MALS</p>	<p>MISSED APPROACH: Climb to 14000 on JAC VOR/DME R-192 to KICNE INT/JAC VOR/DME 26.6 DME and hold, continue climb-in-hold to 14000.</p>
--	--------------------	---

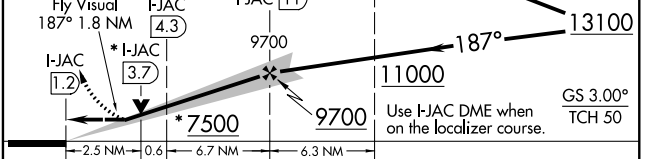
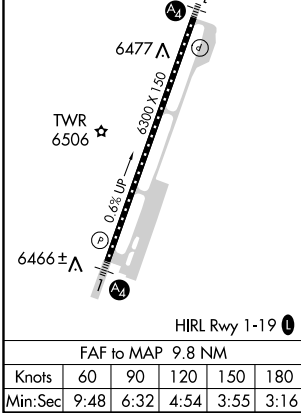
ATIS ★ 120.625	SALT LAKE CENTER 133.25 285.6	JACKSON TOWER ★ 118.075 (CTAF) 0	GND CON 124.55	UNICOM 122.95
---------------------------------	--	---	---------------------------------	--------------------------------



NW-1, 15 AUG 2019 to 12 SEP 2019

NW-1, 15 AUG 2019 to 12 SEP 2019

ELEV 6451	D	TDZE 6451	14000	*LOC only	QUIRT I-JAC 17.3	Remain within 10 NM
-----------	----------	-----------	-------	-----------	------------------	---------------------



CATEGORY	A	B	C	D
S-ILS 19	7063-2 612 (700-2)			
S-LOC 19	7500-1¼ 1049 (1100-1¼)	7500-1½ 1049 (1100-1½)	7500-3	1049 (1100-3)
CIRCLING	7500-1¼ 1049 (1100-1¼)	7500-1½ 1049 (1100-1½)	7500-3	1049 (1100-3)
SOSUE FIX MINIMUMS (DME REQUIRED)				
S-LOC 19	7300-1 849 (900-1)	7300-1¼ 849 (900-1¼)	7300-2½ 849 (900-2½)	7300-2¾ 849 (900-2¾)
CIRCLING	7300-1 849 (900-1)	7300-1¼ 849 (900-1¼)	7300-2½ 849 (900-2½)	7300-2¾ 849 (900-2¾)