

RNAV (GPS) Y RWY 14R

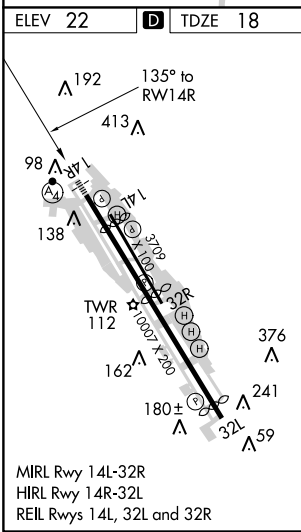
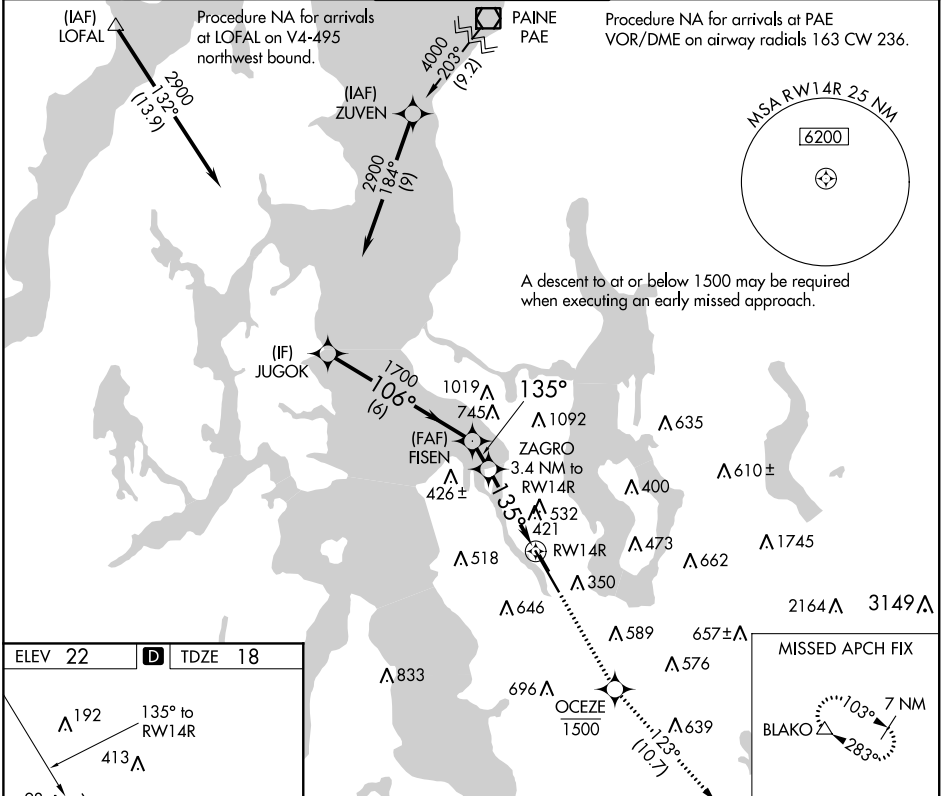
BOEING FIELD/KING COUNTY INTL (BFI)

APP CRS	Rwy Idg	9120
135°	TDZE	18
	Apt Elev	22

▼ Circling NA for Cats C and D northeast of Rwy 14L-32R.
▲ DME/DME RNP -0.3 NA. For inop ALS, increase LNAV Cat C and D visibility to 1 $\frac{1}{2}$ SM. Rwy 14R helicopter visibility below RVR 4000 NA. Circling Rwy 32R NA at night.

MALSF MISSED APPROACH: Climb direct OCEZE, cross OCEZE at or below 1500, then climb to 6400 on track 123° to BLAKO and hold, continue climb-in-hold to 6400.

ATIS	SEATTLE APP CON	BOEING TOWER	GND CON	CLNC DEL
127.75	119.2 284.7	120.6 257.8	121.9	132.4



ELEV 22	D	TDZE 18			
JUGOK	FISEN	ZAGRO	OCEZE	6400	BLAKO
2900	1700	1280	1500	tr 123°	△
6 NM		1.1 NM	1.7 NM	1.7 NM	
CATEGORY	A	B	C	D	
LNAV MDA	680/40	662 (700- $\frac{3}{4}$)	680-1 $\frac{3}{4}$	662 (700-1 $\frac{1}{4}$)	
C CIRCLING	760-1 738 (800-1)	880-1 $\frac{1}{4}$ 858 (900-1 $\frac{1}{4}$)	960-2 $\frac{3}{4}$ 938 (1000-2 $\frac{3}{4}$)	960-3 938 (1000-3)	

NW-1, 15 AUG 2019 to 12 SEP 2019

NW-1, 15 AUG 2019 to 12 SEP 2019