

RNAV (GPS) RWY 32

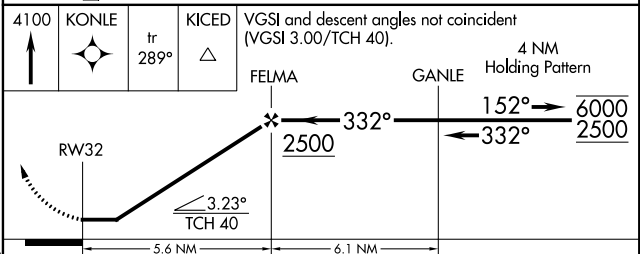
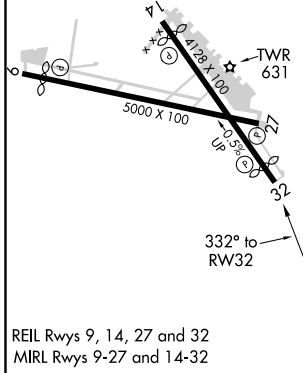
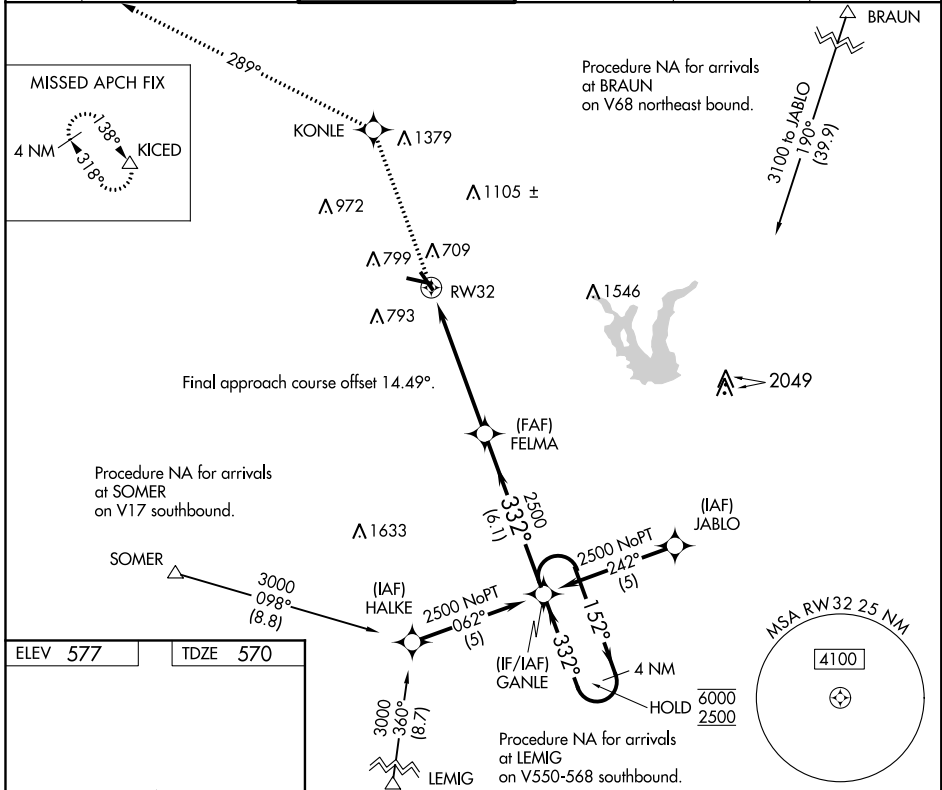
STINSON MUNI (SSF)

APP CRS 332°	Rwy Idg TDZE Apt Elev	3756 570 577
------------------------	-----------------------------	---

RNP APCH.
 ▼ Rwy 32 helicopter visibility reduction below 1 SM NA.
 Straight-in Rwy 32 NA at night, Circling Rwy 9, 32 NA at night.

MISSED APPROACH: Climb to 4100 direct KONLE and on track 289° to KICED and hold.

ATIS 128.8	SAN ANTONIO APP CON 125.7 290.225	STINSON TOWER ★ 118.2 (CTAF) 379.9	GND CON 121.7 379.9	CLNC DEL 121.7	UNICOM 122.95
----------------------	---	--	-------------------------------	--------------------------	-------------------------



CATEGORY	A	B	C	D
LNAV MDA	1020-1	450 (500-1)	1020-1 3/8 450 (500-1 3/8)	NA
CIRCLING	1040-1 463 (500-1)	1100-1 523 (600-1)	1100-1 1/2 523 (600-1 1/2)	NA