


WAAS CH <b>69513</b> <b>W31A</b>	APP CRS <b>312°</b>	Rwy Idg <b>4825</b> TDZE <b>82</b> Apt Elev <b>85</b>
--	------------------------	---

# RNAV (GPS) Z RWY 31

SALINAS MUNI (SNS)

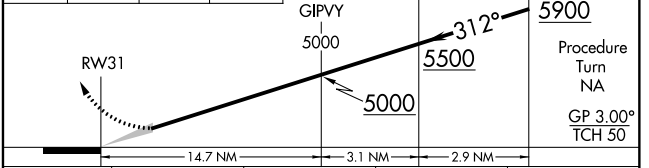
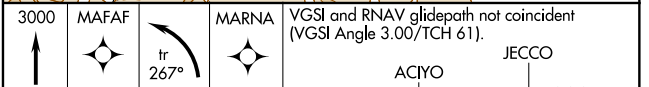
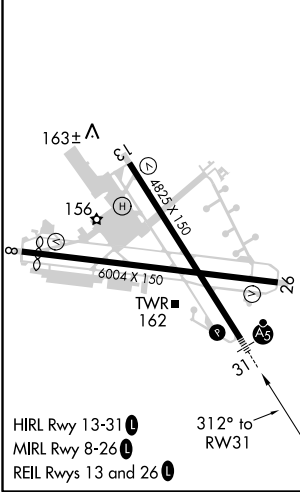
**⚠** Baro-VNAV NA when using Monterey Rgnl altimeter setting. For uncompensated Baro-VNAV systems, LNAV/VNAV NA below -15°C (5°F) or above 50°C (122°F).  
**⚠** DME/DME RNP-0.3 NA. When local altimeter setting not received, use Monterey Rgnl altimeter setting and increase all DA 53 feet and LNAV/VNAV all Cats visibility to RVR 5000.

**MALSR**  
  
**MISSED APPROACH:** Climb to 3000 direct MAFAF and left turn via track 267° to MARNA and hold.

ATIS <b>124.85</b>	NORCAL APP CON <b>133.0 251.15</b>	<b>SALINAS TOWER *</b> <b>119.525 (CTAF) 0 239.3</b>	GND CON <b>121.7</b>	UNICOM <b>122.95</b>
-----------------------	---------------------------------------	---	-------------------------	-------------------------



ELEV 85	TDZE 82
---------	---------



CATEGORY	A	B	C	D
LPV DA		282/24	200 (200-½)	
LNAV/VNAV DA		478/40	396 (400-¾)	

SW-2, 15 AUG 2019 to 12 SEP 2019

SW-2, 15 AUG 2019 to 12 SEP 2019