

RNAV (GPS) Y RWY 31

SALINAS MUNI (SNS)

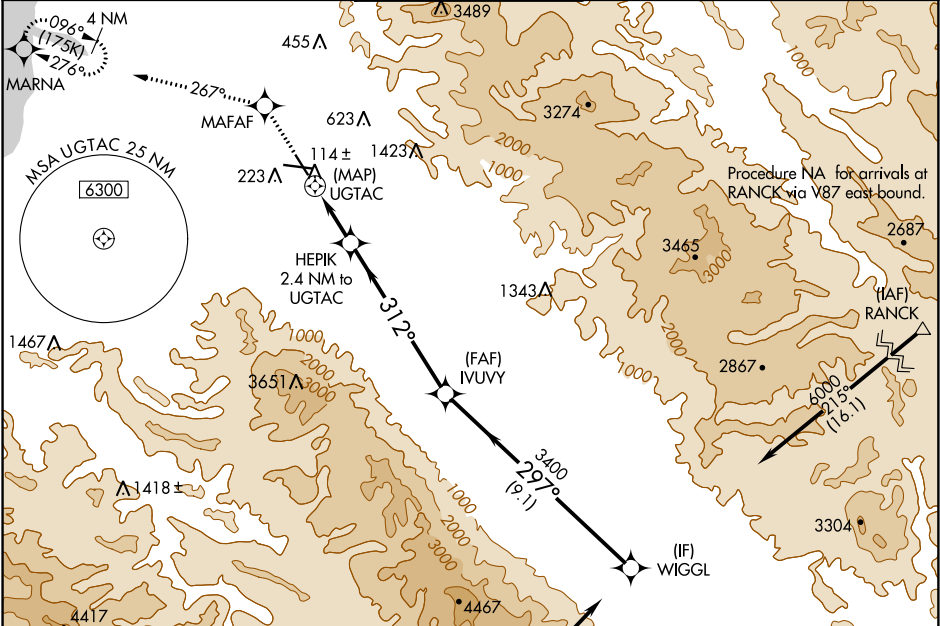
APP CRS	Rwy Idg	4825
312°	TDZE	82
	Apt Elev	85

⚠ For inoperative MALSR, increase LNAV Cat D visibility to RVR 6000.
⚠ DME/DME RNP-0.3 NA. When local altimeter not received, use Monterey Rgnl altimeter setting and increase all MDA 60 feet and increase LNAV Cat C visibility to RVR 4000.

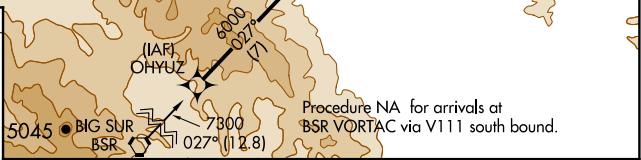
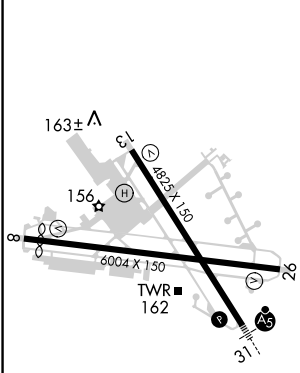
MALSR


MISSED APPROACH: Climb to 3000 direct MAFAF and left turn via track 267° to MARN A and hold.

ATIS 124.85	NORCAL APP CON 133.0 251.15	SALINAS TOWER * 119.525 (CTAF) 0 239.3	GND CON 121.7	UNICOM 122.95
-----------------------	---------------------------------------	--	-------------------------	-------------------------



ELEV 85	TDZE 82
---------	---------



3000	MAFAF	MARN A	WIGGL
↑	✧	tr 267°	✧
	HEPIK 2.4 NM to UGTAC	IVUVY	6000
	UGTAC	312°	297°
	1140	3400	
	0.5	2.4 NM	6.4 NM
		9.1 NM	
	VGSJ and descent angles not coincident (VGSJ Angle 3.00/TCH 61).		
	Procedure Turn NA		

CATEGORY	A	B	C	D
LNAV MDA	440/24 358 (400-½)			440/50 358 (400-1)
CIRCLING	500-1 415 (500-1)	540-1 455 (500-1)	540-1½ 455 (500-1½)	760-2¼ 675 (700-2¼)

SW-2, 15 AUG 2019 to 12 SEP 2019

SW-2, 15 AUG 2019 to 12 SEP 2019