

APP CRS	Rwy Idg	<b>4825</b>
<b>132°</b>	TDZE	<b>85</b>
	Apt Elev	<b>85</b>

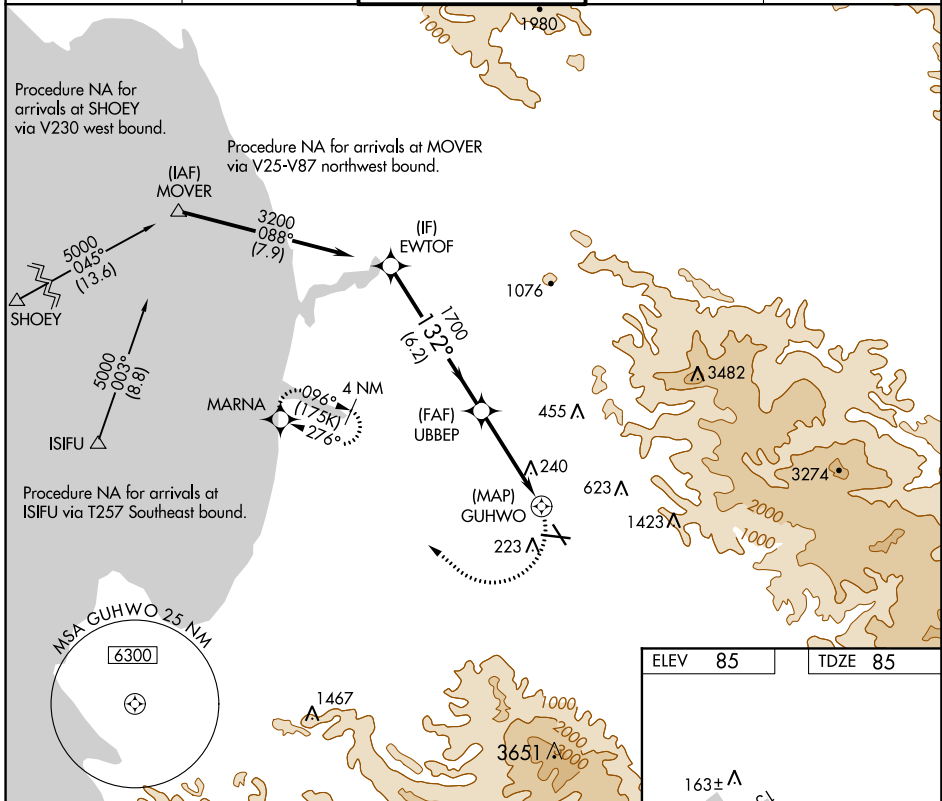
# RNAV (GPS) RWY 13

SALINAS MUNI (SNS)

**▼** DME/DME RNP-0.3 NA. Visibility reduction by helicopters NA.  
**▲** When local altimeter setting not received, use Monterey Rgnl altimeter setting and increase all MDA 60 feet and increase LNAV Cat C and D visibility ¼ mile.

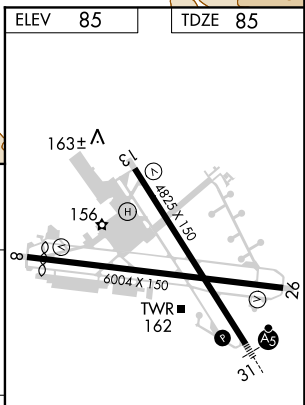
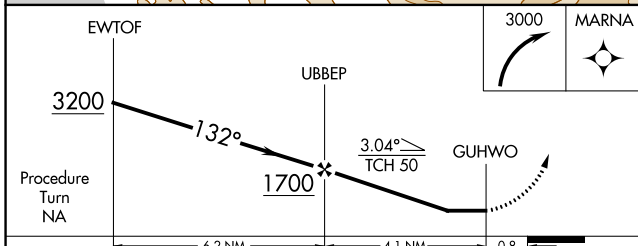
MISSED APPROACH: Climbing right turn to 3000 direct MARNA and hold.

ATIS <b>124.85</b>	NORCAL APP CON <b>133.0 251.15</b>	SALINAS TOWER ★ <b>119.525 (CTAF) 239.3</b>	GND CON <b>121.7</b>	UNICOM <b>122.95</b>
-----------------------	---------------------------------------	--	-------------------------	-------------------------



SW-2, 15 AUG 2019 to 12 SEP 2019

SW-2, 15 AUG 2019 to 12 SEP 2019



	6.2 NM		4.1 NM		0.8
CATEGORY	A	B	C	D	
LNAV MDA	540-1	455 (500-1)	540-1¼ 455 (500-1¼)	540-1½ 455 (500-1½)	
CIRCLING	540-1	455 (500-1)	540-1½ 455 (500-1½)	760-2¼ 675 (700-2¼)	

HIRL Rwy 13-31 **Ⓛ**  
 MIRL Rwy 8-26 **Ⓛ**  
 REIL Rwy 13 and 26 **Ⓛ**