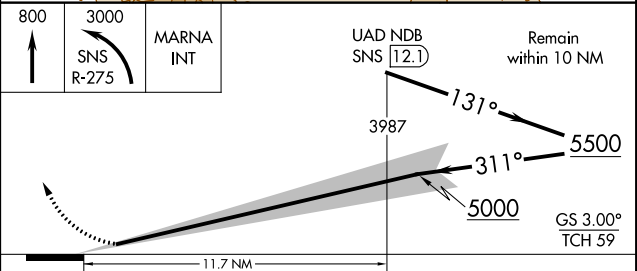
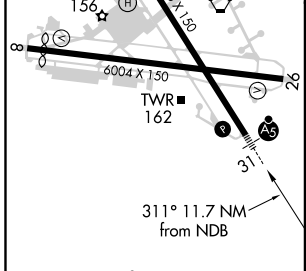
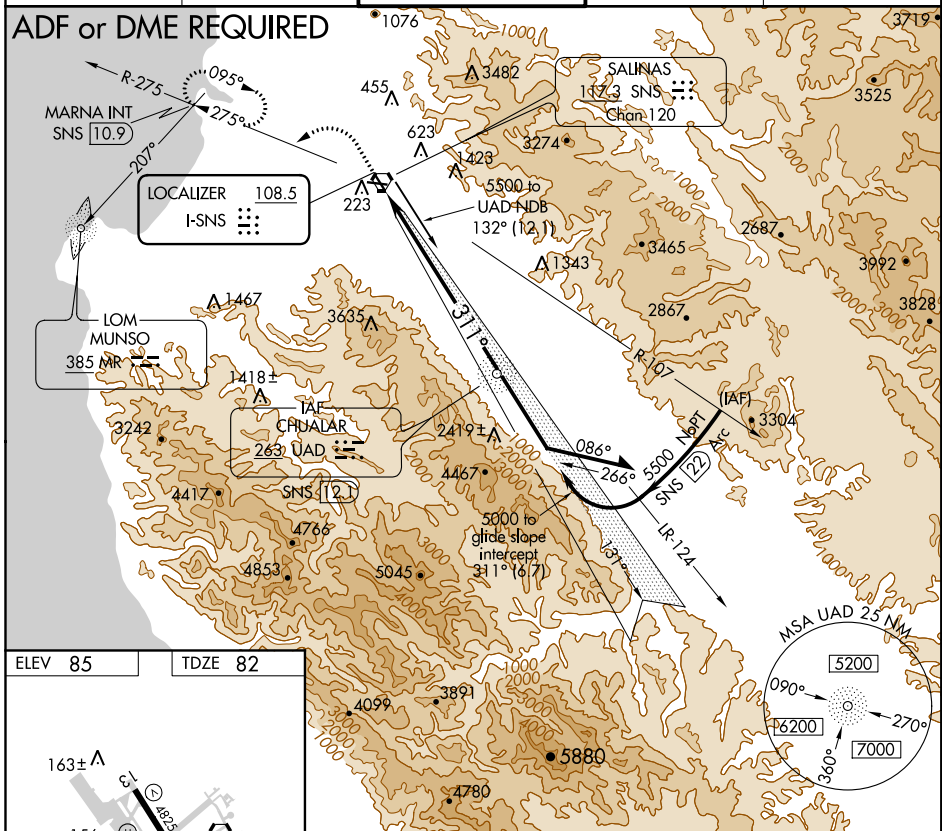


LOC I-SNS <b>108.5</b>	APP CRS <b>311°</b>	Rwy ldg TDZE Apt Elev	<b>4825</b> <b>82</b> <b>85</b>
---------------------------	------------------------	-----------------------------	---------------------------------------

**ILS RWY 31**  
SALINAS MUNI (SNS)

When local altimeter setting not received, use Monterey Rgnl altimeter setting and increase S-ILS 31 DA 53 feet.	MALSR 	MISSED APPROACH: Climb to 800 then climbing left turn to 3000 via SNS R-275 to MARNA INT/10.9 DME and hold.
--	-----------	---

ATIS <b>124.85</b>	NORCAL APP CON <b>133.0 251.15</b>	SALINAS TOWER ★ <b>119.525 (CTAF) 239.3</b>	GND CON <b>121.7</b>	UNICOM <b>122.95</b>
-----------------------	---------------------------------------	--	-------------------------	-------------------------



HIRL Rwy 13-31	MIRL Rwy 8-26	REIL Rwy 13 and 26		
CATEGORY	A	B	C	D
S-ILS 31	282/24 200 (200-1/2)			

SW-2, 15 AUG 2019 to 12 SEP 2019

SW-2, 15 AUG 2019 to 12 SEP 2019