

# CHALONE THREE DEPARTURE

AL-363 (FAA)

SALINAS MUNI (SNS)  
SALINAS, CALIFORNIA

WOODSIDE  
113.9 OS1  
Chan 86  
N37°23.55'-W122°16.88'  
L-2-3, H-3

SAN JOSE  
114.1 SJC  
Chan 88  
N37°22.48'-W121°56.68'  
L-2-3

SALINAS  
117.3 SNS  
Chan 120  
N36°39.83'-W121°36.19'  
L-3, H-3

PANOCHÉ  
112.6 PXN  
Chan 73  
N36°42.93'-W120°46.72'  
L-3, H-3

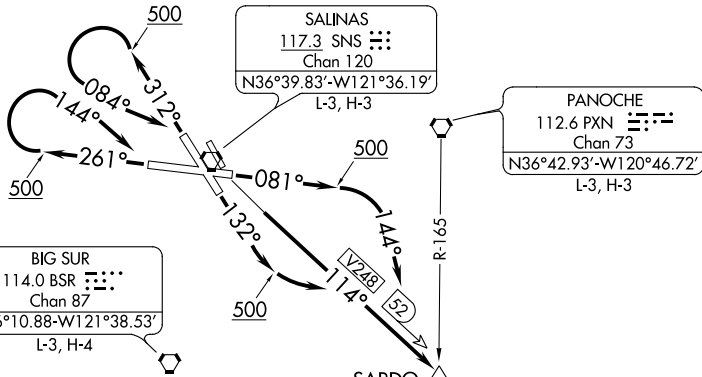
BIG SUR  
114.0 BSR  
Chan 87  
N36°10.88'-W121°38.53'  
L-3, H-4

SARDO  
N36°05.24'  
W120°47.59'  
L-3

AVENAL  
117.1 AVE  
Chan 118  
N35°38.82'-W119°58.72'  
L-3-7, H-4

FILLMORE  
112.5 FIM  
Chan 72  
N34°21.40'-W118°52.88'  
L-3-4-7, H-4

ATIS  
124.85  
GND CON  
121.7  
NORCAL DEP CON  
133.0 251.15  
CTAF  
119.525



### TAKEOFF MINIMUMS

Rwys 8, 13: Standard with minimum climb of 360' per NM to 6000.  
Rwys 26, 31: Cats A/B standard with minimum climb of 380' per NM to 6000.  
Cats C/D standard with minimum climb of 550' per NM to 6000.

NOTE: Cat A/B aircraft departing Rwy 26 and 31 - Do not exceed 210 K until passing SARDO INT.

NOTE: Chart not to scale.

### DEPARTURE ROUTE DESCRIPTION

**TAKEOFF RUNWAY 8:** Climb heading 081° to 500 then climbing right turn heading 144° to intercept SNS R-114 (V248) southeast bound to SARDO INT. Thence . . .

**TAKEOFF RUNWAY 13:** Climb heading 132° to 500 then climbing left turn to intercept SNS R-114 (V248) southeast bound to SARDO INT. Thence . . .

**TAKEOFF RUNWAY 26:** Climb heading 261° to 500 then climbing right turn heading 144° to intercept SNS R-114 (V248) southeast bound to SARDO INT. Thence . . .

**TAKEOFF RUNWAY 31:** Climb heading 312° to 500 then climbing left turn heading 084° to intercept SNS R-114 (V248) southeast bound to SARDO INT. Thence . . .

. . . Proceed on assigned route. Expect clearance to filed altitude 5 minutes after departure.

# CHALONE THREE DEPARTURE

SW-2, 15 AUG 2019 to 12 SEP 2019

SW-2, 15 AUG 2019 to 12 SEP 2019