

(ZEPER1.ZEPER) 18144

# ZEPER ONE DEPARTURE (RNAV)

AL-322 (FAA)

PHOENIX SKY HARBOR INTL (PHX)  
PHOENIX, ARIZONA

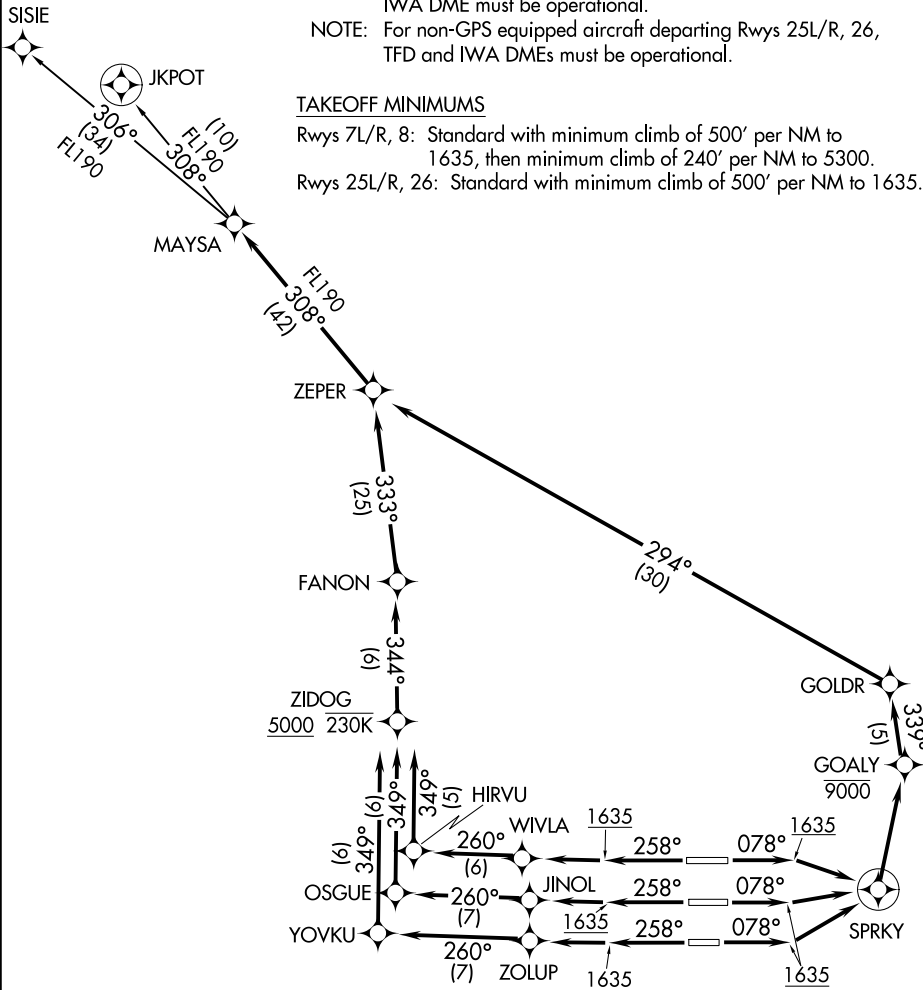
D-ATIS  
127.575  
CLNC DEL  
118.1 269.2  
CPDLC  
GND CON  
119.75 269.2 (NORTH)  
132.55 269.2 (SOUTH)  
PHOENIX TOWER  
118.7 278.8 (Rwy 8-26)  
120.9 254.3 (Rwys 7L-25R, 7R-25L)  
PHOENIX DEP CON  
119.2 281.45

**TOP ALTITUDE:  
8000**

- NOTE: RNAV 1.  
NOTE: Turbojets and turboprops only.  
NOTE: RADAR required.  
NOTE: DME/DME/IRU or GPS required.  
NOTE: Aircraft filing over EED, HEC or PMD, use JKPOT TRANSITION, all others use SISIE TRANSITION.  
NOTE: For non-GPS equipped aircraft departing Rwys 7L/R, 8, IWA DME must be operational.  
NOTE: For non-GPS equipped aircraft departing Rwys 25L/R, 26, TFD and IWA DMEs must be operational.

### TAKEOFF MINIMUMS

Rwys 7L/R, 8: Standard with minimum climb of 500' per NM to 1635, then minimum climb of 240' per NM to 5300.  
Rwys 25L/R, 26: Standard with minimum climb of 500' per NM to 1635.



NOTE: Chart not to scale.

(NARRATIVE ON FOLLOWING PAGE)

# ZEPER ONE DEPARTURE (RNAV)

(ZEPER1.ZEPER) 24MAY18

PHOENIX, ARIZONA  
PHOENIX SKY HARBOR INTL (PHX)

SW-4, 15 AUG 2019 to 12 SEP 2019

SW-4, 15 AUG 2019 to 12 SEP 2019