

WAAS CH 65811 W07A	APP CRS 078°	Rwy Idg TDZE 1116 Apt Elev 1135
--	------------------------	---

RNAV (GPS) Y RWY 7L

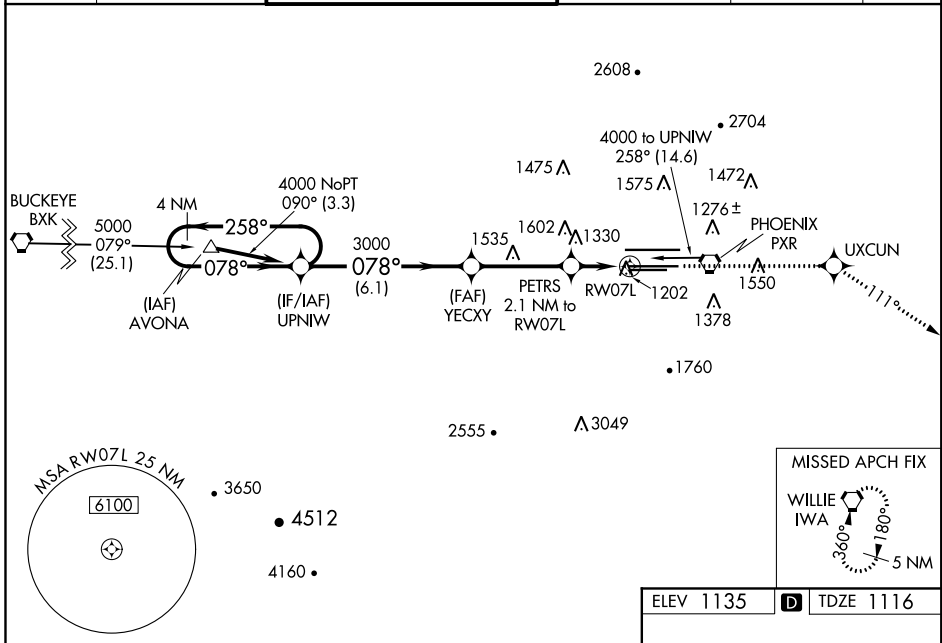
PHOENIX SKY HARBOR INTL (PHX)

⚠ For inoperative MALSR, increase LPV all Cats visibility to RVR 5000. For uncompensated Baro-VNAV systems, LNAV/VNAV NA below -17°C (2°F) or above 46°C (114°F). DME/DME RNP-0.3 NA. Simultaneous approach authorized with ILS or LOC Rwy 8. Use of FD or AP providing RNAV track guidance required during simultaneous operations. LNAV procedure NA during simultaneous operations.



MISSED APPROACH: Climb to 5000 direct UXCUN and via 111° track to IWA VORTAC and hold.

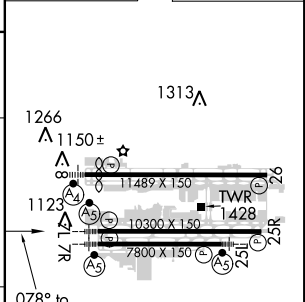
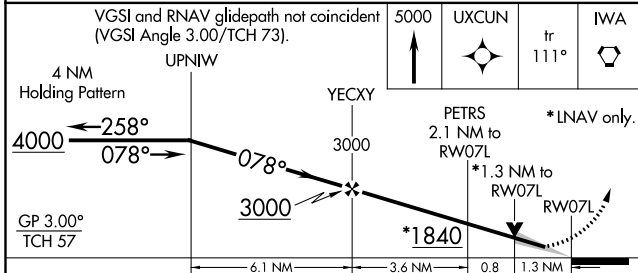
D-ATIS 127.575	PHOENIX APP CON 128.65 353.9	PHOENIX TOWER 118.7 278.8 (Rwy 8-26) 120.9 254.3 (Rwy 7L-25R, 7R-25L)	GND CON 119.75 269.2 (N) 132.55 269.2 (S)	CLNC DEL 118.1 269.2	CPDLC
--------------------------	--	---	---	--------------------------------	-------



SW-4, 15 AUG 2019 to 12 SEP 2019

SW-4, 15 AUG 2019 to 12 SEP 2019

ELEV 1135	D TDZE 1116
-----------	--------------------



CATEGORY	A	B	C	D
LPV DA	1389/24		273 (300-½)	
LNAV/VNAV DA	1519/50		403 (400-1)	
LNAV MDA	1580/24	464 (500-½)	1580/40 464 (500-¾)	1580/50 464 (500-1)
CIRCLING	1740-1	605 (700-1)	1740-1¾ 605 (700-1¾)	1920-2½ 785 (800-2½)

HIRL Rwy 8-26, 7L-25R and 7R-25L
REIL Rwy 26