

WAAS CH 82211 W25B	APP CRS 258°	Rwy Idg TDZE Apt Elev	7800 1126 1135
--	------------------------	-----------------------------	---

RNAV (GPS) Y RWY 25L

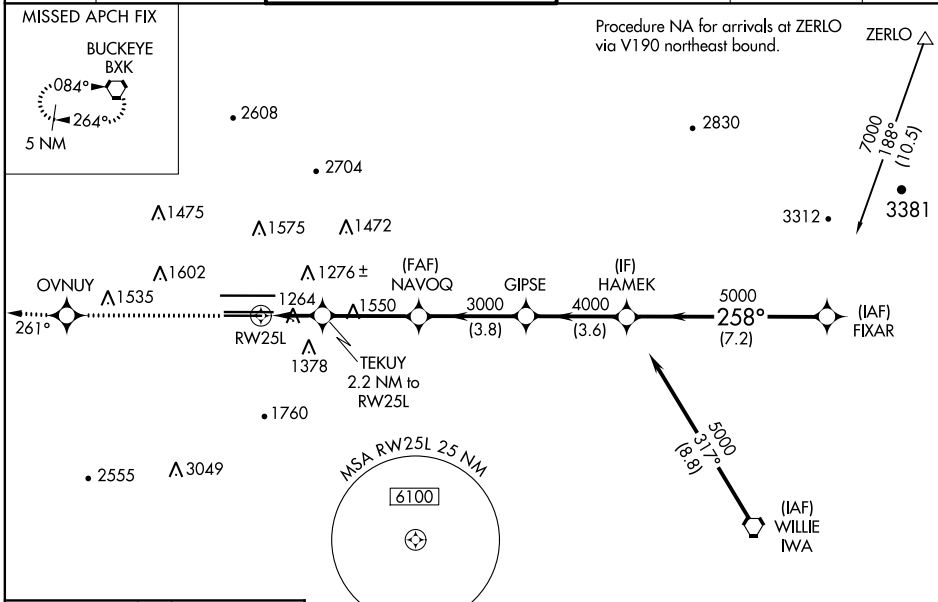
PHOENIX SKY HARBOR INTL (PHX)

⚠ For inoperative MALSR, increase LPV all Cts visibility to 1¼. For uncompensated Baro-VNAV systems, LNAV/VNAV NA below -17°C (2°F) or above 46°C (114°F). DME/DME RNP-0.3 NA. Simultaneous approach authorized with ILS or LOC Rwy 26. Use of FD or AP providing RNAV track guidance required during simultaneous operations. LNAV procedure NA during simultaneous operations.

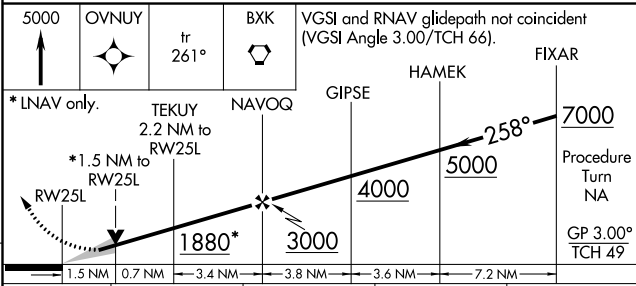
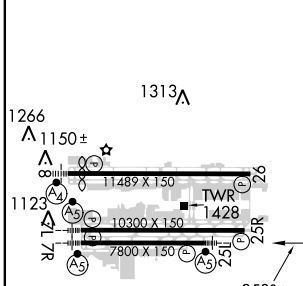


MISSED APPROACH: Climb to 5000 direct OVNUI and via 261° track to BKK VORTAC and hold.

D-ATIS 127.575	PHOENIX APP CON 128.65 353.9	PHOENIX TOWER 118.7 278.8 (Rwy 8-26) 120.9 254.3 (Rwy 7L-25R, 7R-25L)	GND CON 119.75 269.2 (N) 132.55 269.2 (S)	CLNC DEL 118.1 269.2	CPDLC
--------------------------	--	---	---	--------------------------------	-------



ELEV 1135	D	TDZE 1126
-----------	----------	-----------



CATEGORY	A	B	C	D
LPV DA		1482-¾	356 (400-¾)	
LNAV/VNAV DA		1613-1¼	487 (500-1¼)	
LNAV MDA	1680-½	554 (600-½)	1680-1 554 (600-1)	1680-1¼ 554 (600-1¼)
CIRCLING	1740-1	605 (700-1)	1740-1¾ 605 (700-1¾)	1920-2½ 785 (800-2½)

SW-4, 15 AUG 2019 to 12 SEP 2019

SW-4, 15 AUG 2019 to 12 SEP 2019