


APP CRS	Rwy Idg	7800
078°	TDZE	1116
	Apt Elev	1135

RNAV (RNP) Z RWY 7R

PHOENIX SKY HARBOR INTL (PHX)

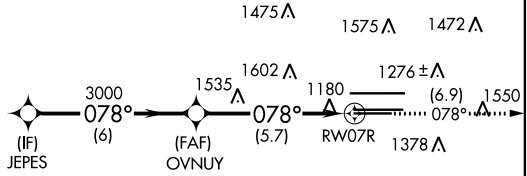
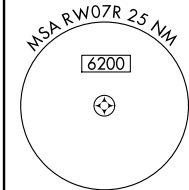
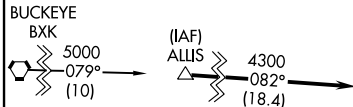
▼ GPS required. For uncompensated Baro-VNAV systems, procedure NA below 1°C (34°F) or above 46°C (116°F). For inoperative MALSR, increase RNP 0.30 all Cats visibility to 1½. Simultaneous approach authorized with ILS or LOC Rwy 8. Use of FD or AP providing RNAV track guidance required during simultaneous operations.

MALSR

MISSED APPROACH: Climb to 5000 via track 078° to NAVOQ and via track 110° to IWA VORTAC and hold.

D-ATIS 127.575	PHOENIX APP CON 128.65 353.9	PHOENIX TOWER 118.7 278.8 (Rwy 8-26) 120.9 254.3 (Rwy 7L-25R, 7R-25L)	GND CON 119.75 269.2 (N) 132.55 269.2 (S)	CLNC DEL 118.1 269.2	CPDLC
--------------------------	--	---	---	--------------------------------	-------

▲ 2358

Procedure NA for arrivals at BUCKEYE (BXK) VORTAC via V461 westbound.



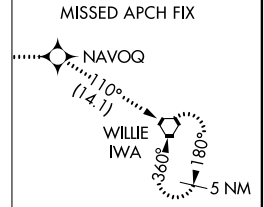
• 2555 ▲ 3049

• 3650

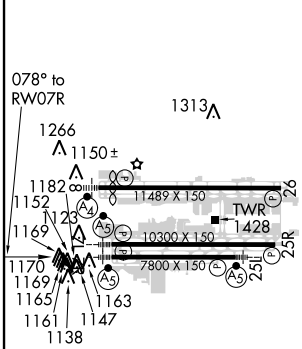
• 4512

• 4160

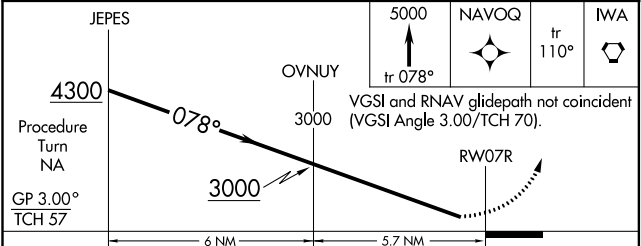
• 4354



ELEV 1135	D	TDZE 1116
-----------	----------	-----------



HIRL Rwy 8-26, 7L-25R and 7R-25L
 REIL Rwy 26



CATEGORY	A	B	C	D
RNP 0.30 DA	1523-1		407 (400-1)	

AUTHORIZATION REQUIRED

SW-4, 15 AUG 2019 to 12 SEP 2019

SW-4, 15 AUG 2019 to 12 SEP 2019