

| | | |
|------------------------|-----------------------------|--|
| APP CRS 258° | Rwy Idg TDZE Apt Elev | 10300 1134 1135 |
|------------------------|-----------------------------|--|

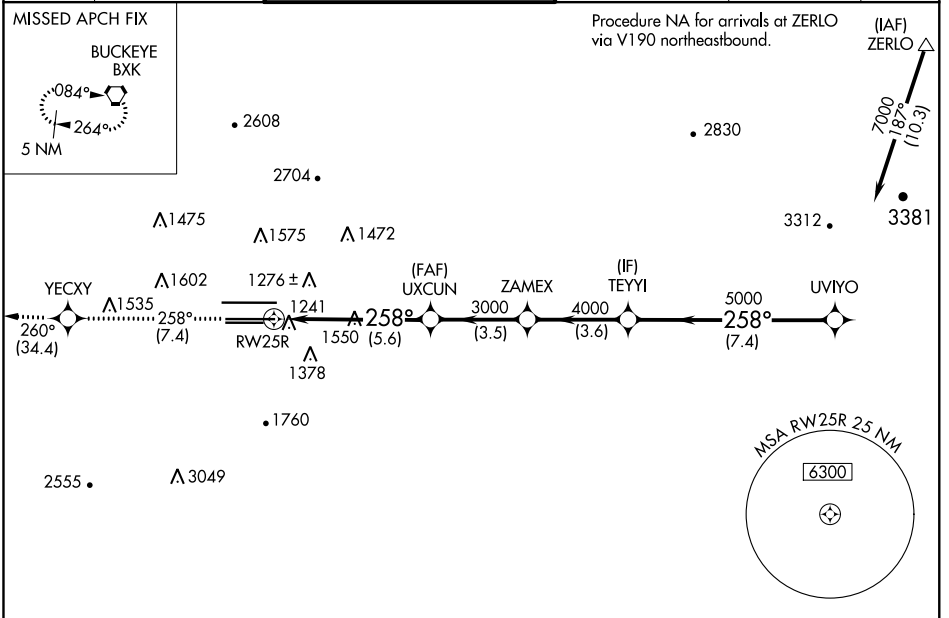
RNAV (RNP) Z RWY 25R

PHOENIX SKY HARBOR INTL (PHX)

Visibility reduction by helicopters NA. GPS required. For uncompensated Baro-VNAV systems, procedure NA below 1°C (34°F) or above 46°C (116°F). Simultaneous approach authorized with ILS or LOC Rwy 26. Use of FD or AP providing RNAV track guidance required during simultaneous operations.

MISSED APPROACH: Climb to 5000 via track 258° to YECXY and via track 260° to BXX VORTAC and hold.

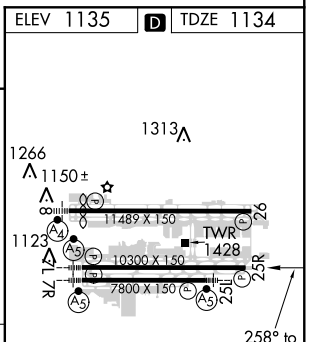
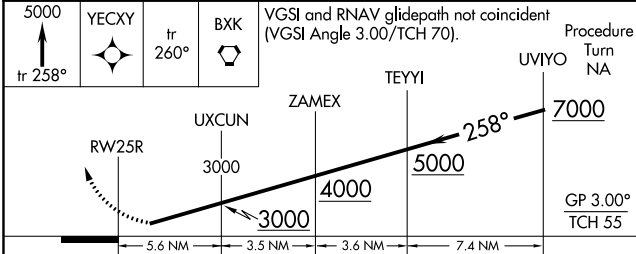
| | | | | | |
|--------------------------|--|---|---|--------------------------------|-------|
| D-ATIS 127.575 | PHOENIX APP CON 128.65 353.9 | PHOENIX TOWER 118.7 278.8 (Rwy 8-26) 120.9 254.3 (Rwy 7L-25R, 7R-25L) | GND CON 119.75 269.2 (N) 132.55 269.2 (S) | CLNC DEL 118.1 269.2 | CPDLC |
|--------------------------|--|---|---|--------------------------------|-------|



SW-4, 15 AUG 2019 to 12 SEP 2019

SW-4, 15 AUG 2019 to 12 SEP 2019

| | |
|-----------|-----------|
| ELEV 1135 | TDZE 1134 |
|-----------|-----------|



| CATEGORY | A | B | C | D |
|-------------|---------|--------------|---|---|
| RNP 0.20 DA | 1597-1½ | 463 (500-1½) | | |
| RNP 0.30 DA | 1622-1¾ | 488 (500-1¾) | | |

AUTHORIZATION REQUIRED

HIRL Rwy 8-26, 7L-25R and 7R-25L
REIL Rwy 26